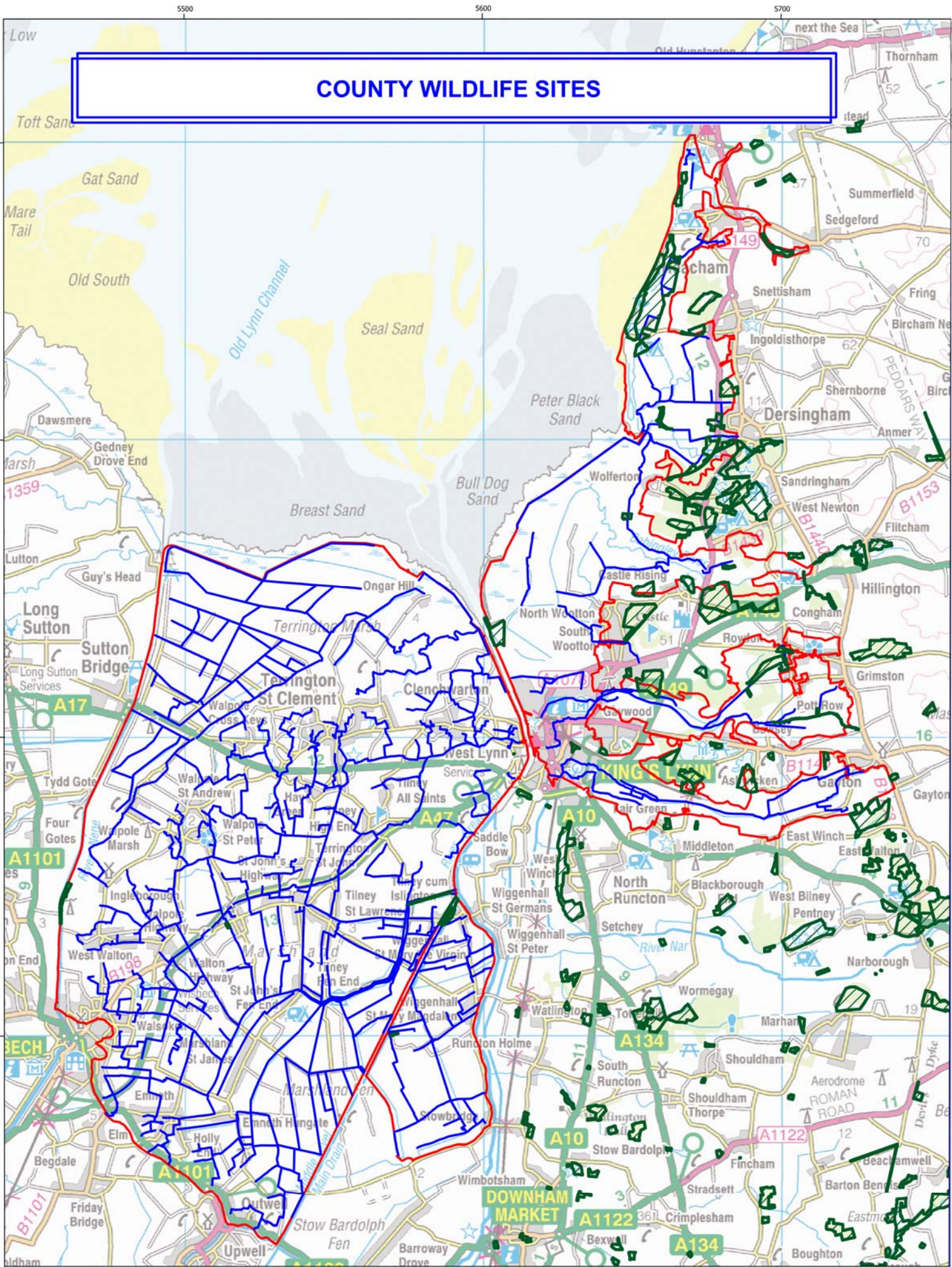


COUNTY WILDLIFE SITES



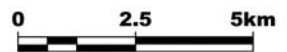
King's Lynn Internal Drainage Board

This map is reproduced from Ordnance Survey material with the permission of Ordnance Survey on behalf of the Controller of Her Majesty's Stationery Office © Crown copyright. Unauthorised reproduction infringes Crown copyright and may lead to prosecution or civil proceedings. © King's Lynn IDB
 Defra, Licence number 100018880, [2008].
 CWS boundary data provided by Norfolk Wildlife Trust.

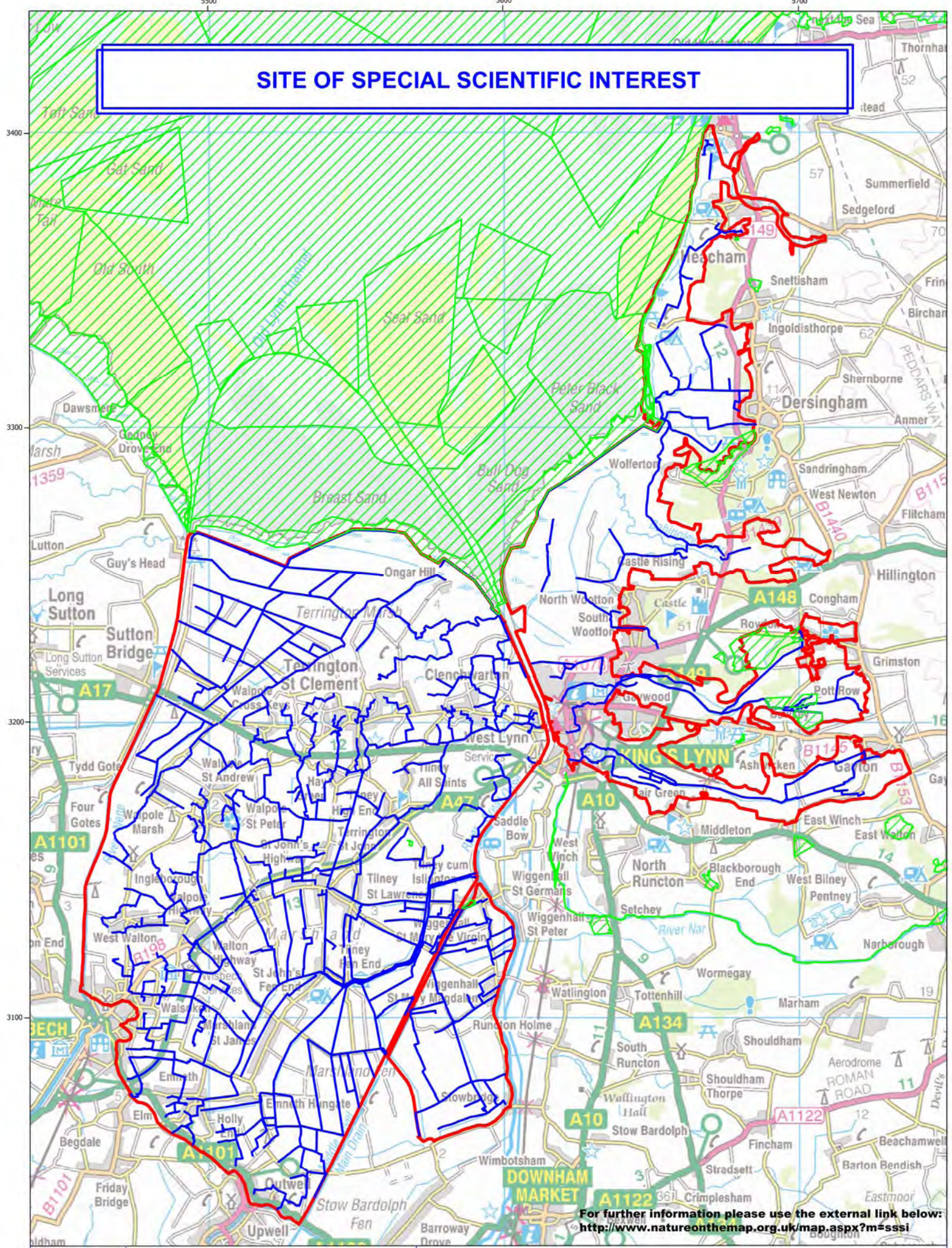
Upload date:
 Dec 2009
 © King's Lynn IDB

Key:

- - IDB Boundary
- - IDB Ordinary Watercourse
- CWS (38)



SITE OF SPECIAL SCIENTIFIC INTEREST



For further information please use the external link below:
<http://www.natureonthemap.org.uk/map.aspx?m=sssi>



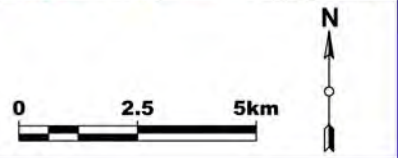
King's Lynn Internal Drainage Board

This map is reproduced from Ordnance Survey material with the permission of Ordnance Survey on behalf of the Controller of Her Majesty's Stationery Office © Crown copyright. Unauthorised reproduction infringes Crown copyright and may lead to prosecution or civil proceedings. Defra, Licence number 100018880, [2009]. SSSI boundary data provided by Natural England.

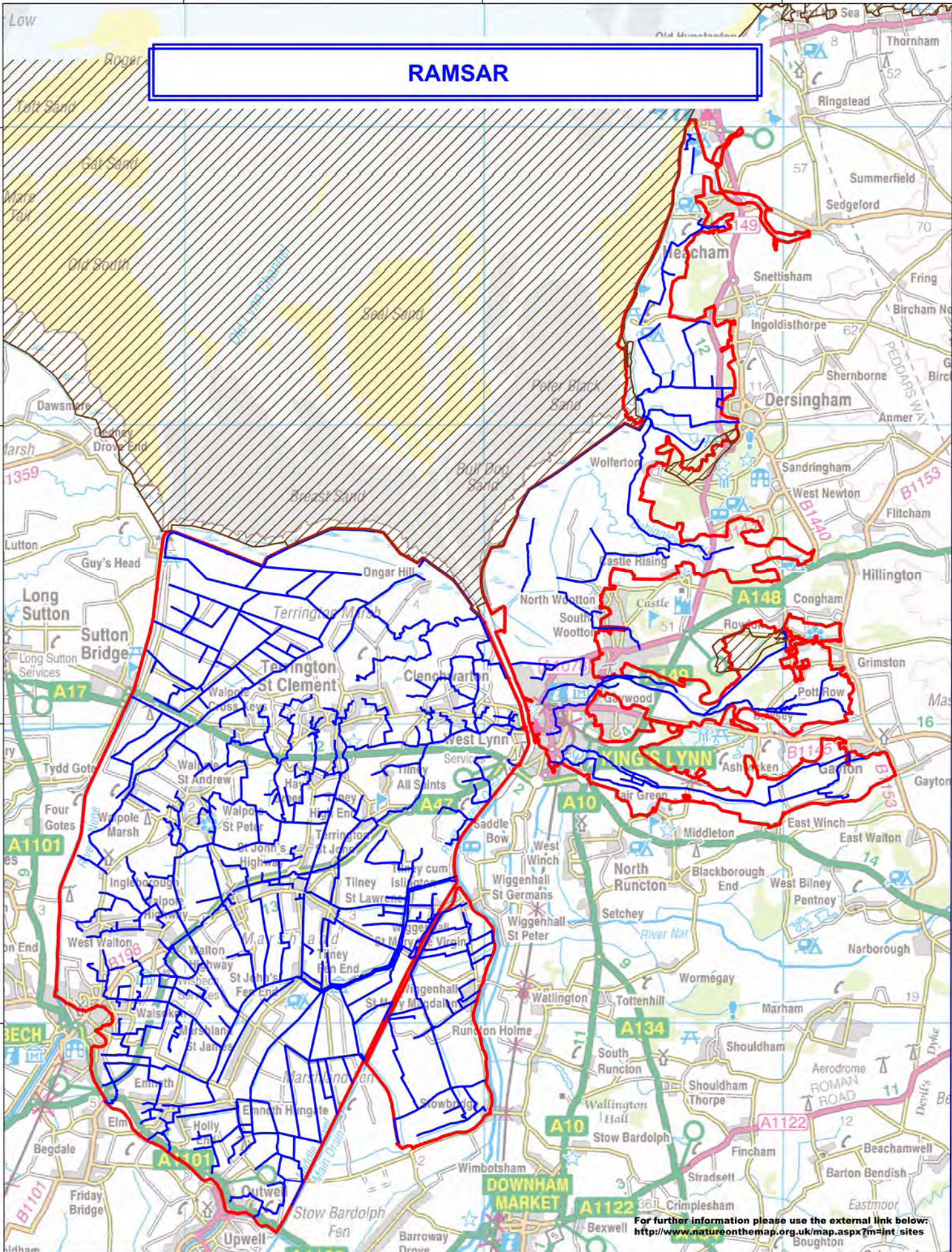
Upload date:
Nov 2009

© King's Lynn IDB

- Key:**
- - IDB Boundary
 - - IDB Ordinary Watercourse
 - SSSI (6)



RAMSAR



For further information please use the external link below:
http://www.natureonthemap.org.uk/map.aspx?m=int_sites



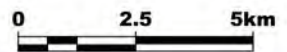
King's Lynn Internal Drainage Board

This map is reproduced from Ordnance Survey material with the permission of Ordnance Survey on behalf of the Controller of Her Majesty's Stationery Office © Crown copyright. Unauthorised reproduction infringes Crown copyright and may lead to prosecution or civil proceedings. © King's Lynn IDB Defra. Licence number 100018880, [2008]. RAMSAR boundary data provided by Natural England.

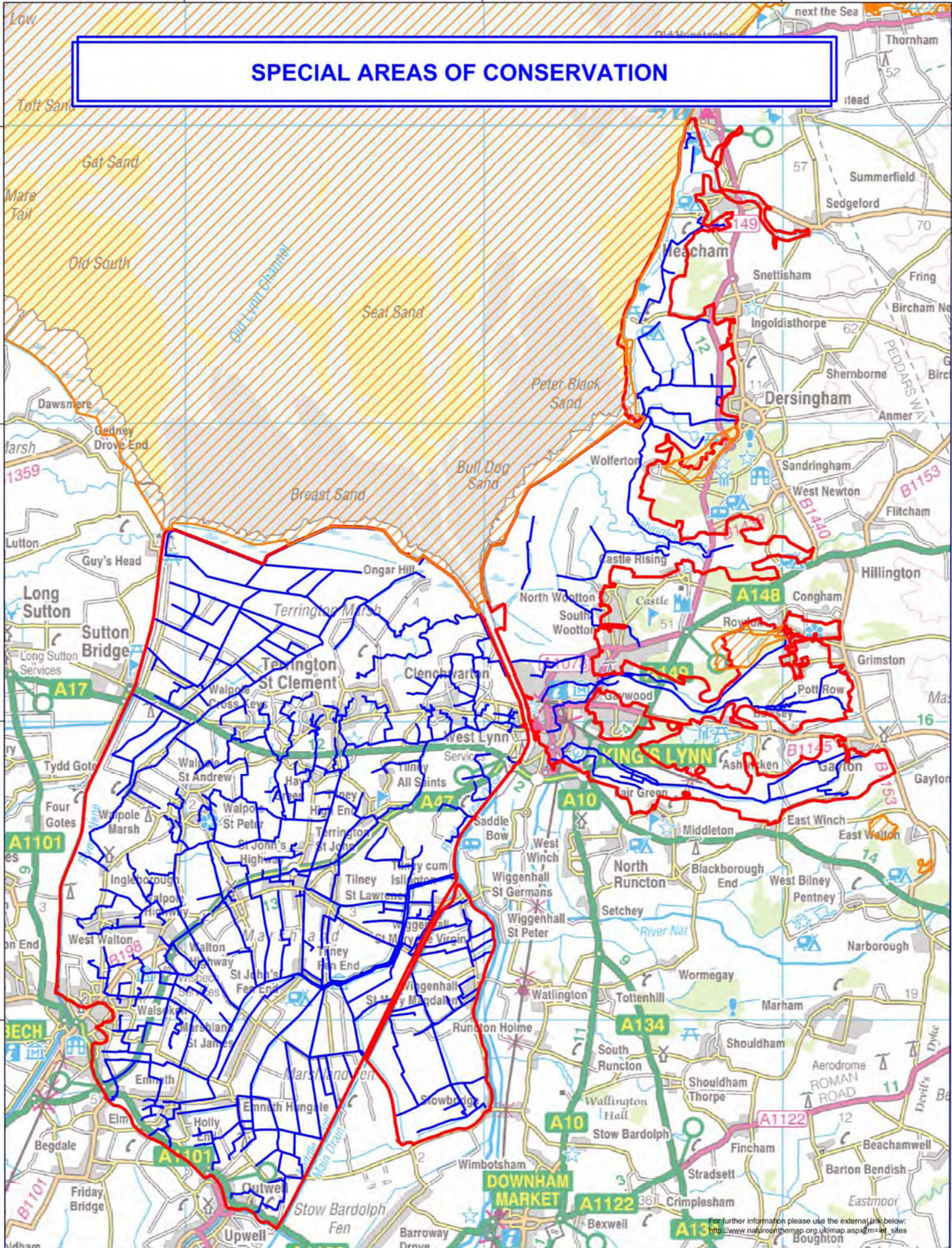
Upload date:
June 2008
© King's Lynn IDB

Key:

- - IDB Boundary
- - IDB Ordinary Watercourse
- RAMSAR (3)



SPECIAL AREAS OF CONSERVATION



For further information please use the external link below:
http://www.natureonthemap.org.uk/map.aspx?m=at_sites



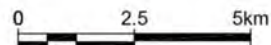
King's Lynn Internal Drainage Board

This map is reproduced from Ordnance Survey material with the permission of Ordnance Survey on behalf of the Controller of Her Majesty's Stationery Office © Crown copyright. Unauthorised reproduction infringes Crown copyright and may lead to prosecution or civil proceedings. Defra, Licence number 100018880, [2009]. SAC boundary data provided by Natural England.

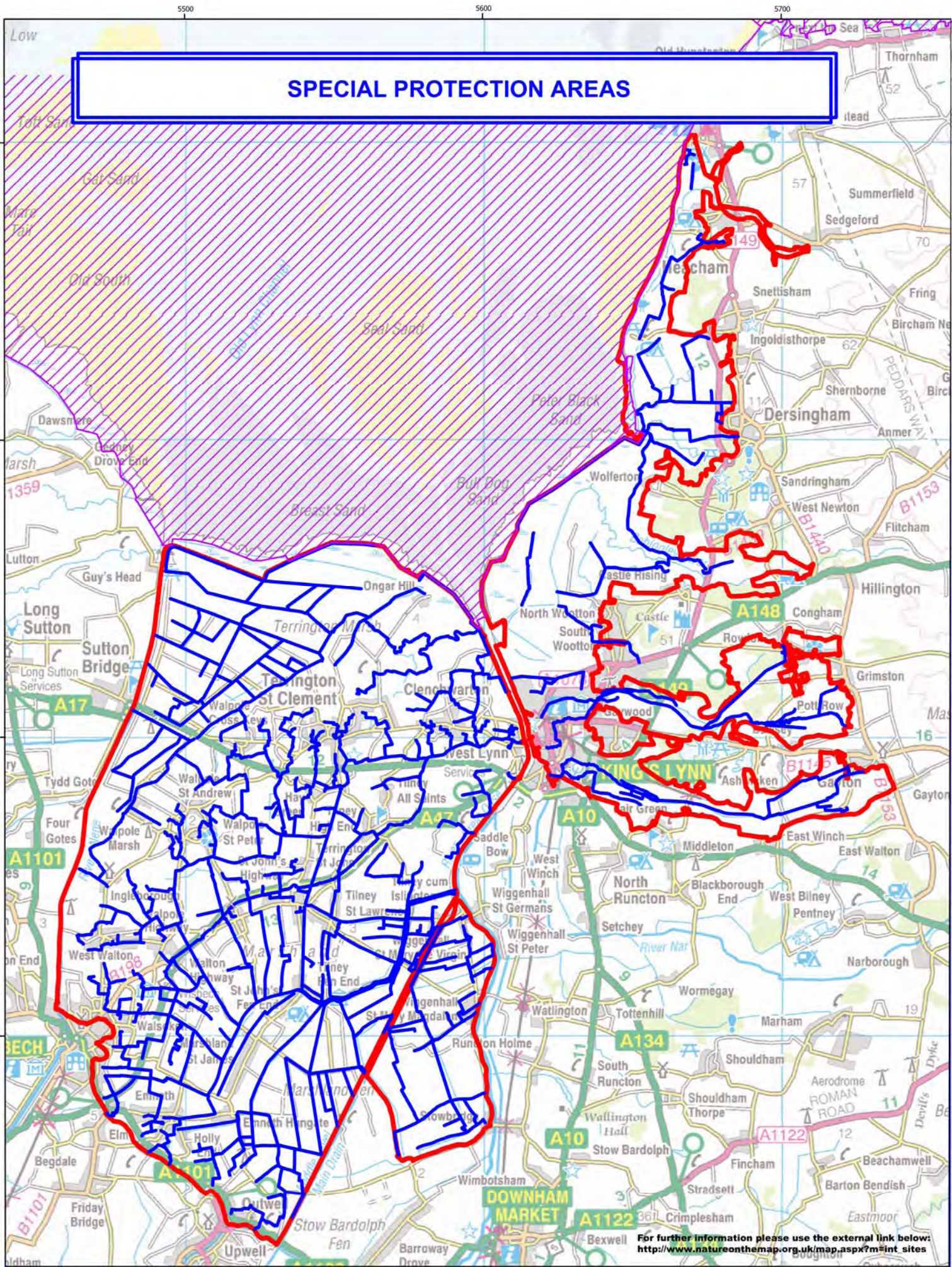
Upload date:
Nov 2009
© King's Lynn IDB

Key:

- - IDB Boundary
- - IDB Ordinary Watercourse
- SAC (2)



SPECIAL PROTECTION AREAS



For further information please use the external link below:
http://www.natureonthemap.org.uk/map.aspx?m=int_sites



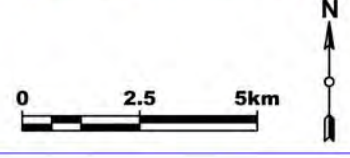
King's Lynn Internal Drainage Board

This map is reproduced from Ordnance Survey material with the permission of Ordnance Survey on behalf of the Controller of Her Majesty's Stationery Office © Crown copyright. Unauthorised reproduction infringes Crown copyright and may lead to prosecution or civil proceedings. © King's Lynn IDB
 Defra, Licence number 100018880, [2008].
 SPA boundary data provided by Natural England.

Upload date:
 June 2008

Key:

- - IDB Boundary
- - IDB Ordinary Watercourse
- SPA (1)



Cautionary Note

Whilst every care has been taken compiling these maps and every attempt made to present up-to-date and accurate information, we cannot guarantee that the maps and information are free of error. The Board shall not be held liable for any loss, damage or inconvenience caused as a result of any inaccuracy or error on these pages. The maps shown on these pages are for indicative purposes only. All detailed inquiries should continue to be addressed to the office.

Should you find any inaccuracies, please contact us here at the office:

Water Management Alliance
Kettlewell House
Austin Fields Industrial Estate
King's Lynn
Norfolk
[PE30 1PH](#)

Tel: +44(0)1553 819600
Fax: +44(0)1553 819639
Email: enquiries@wlma.org.uk