

KING'S LYNN INTERNAL DRAINAGE BOARD

REGISTER OF DRAINAGE HEREDITAMENTS

Part 2

WATER MANAGEMENT ALLIANCE

Initial Date of Register: 28th July 2004

Version 1

Orders have been made under section 24(6) of the Land Drainage Act 1930 (now section 38 of the Land Drainage Act 1991) dividing two of the former Drainage Districts (Snettisham IDB and Wingland IDB) into Sub-Districts for the purposes of raising expenses. These orders still apply today. Drainage rates and Special levies may therefore vary according to the Sub-District in which the hereditament/other land is situated. Copies of the orders are set out in this Part of the Register.

DIFFERENTIAL RATING ORDER

WHEREAS the Snettisham Internal Drainage Board being the drainage board for the Snettisham Internal Drainage District are empowered by Section 24(6) of the Land Drainage Act 1930, as amended by the Land Drainage Act 1961, if, having regard to all the circumstances of the case, they think it is just so to do, to make and levy differential rates and for that purpose to divide the said district into sub-districts. AND WHEREAS the said Board think that it is just to make and levy differential rates as aforesaid.

NOW THEREFORE the said Board in exercise of the powers vested in them by Section 24 of the said Act of 1930 and after consultation with the Great Ouse River Authority, hereby order as follows:-

1. This Order may be cited as the Snettisham Internal Drainage Board (Differential Rating) Order 1968.
2. The Snettisham Internal Drainage Board (Differential Rating Order) 1967 is hereby revoked, except so far as it relates to any drainage rate made for a period ending before the 1st April 1968.
3. The said district shall be divided into two sub-districts which sub-districts are shown in colour on the map sealed by the Board in relation to this Order and are set out in the Schedule to this Order.
4. The rates to be levied on any land coloured green on the map sealed in relation to this Order shall be in respect only of that part of the contribution required from the said Board by the Great Ouse River Authority under Section 21(1) of the Land Drainage Act, 1930, as is certified by the Treasurer for the time being of that Authority to represent a contribution in respect of sea defence works and in respect of the administrative expenses of the said Board in respect thereof.

SCHEDULE

Sub-District

Colour on Map

A

Pink

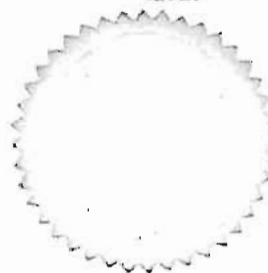
B

Green

THE COMMON SEAL of the SNETTISHAM
INTERNAL DRAINAGE BOARD was here
unto affixed this 10th
day of June 1968
in the presence of

John Lambert
Chairman

John
Clerk



The Minister of Agriculture, Fisheries and Food HEREBY CONFIRMS
this Differential Rating Order.

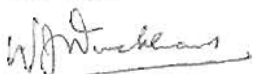
IN WITNESS whereof the Official Seal of the
Minister of Agriculture, Fisheries
and Food is hereunto affixed this
26th July 1968.

L. S.

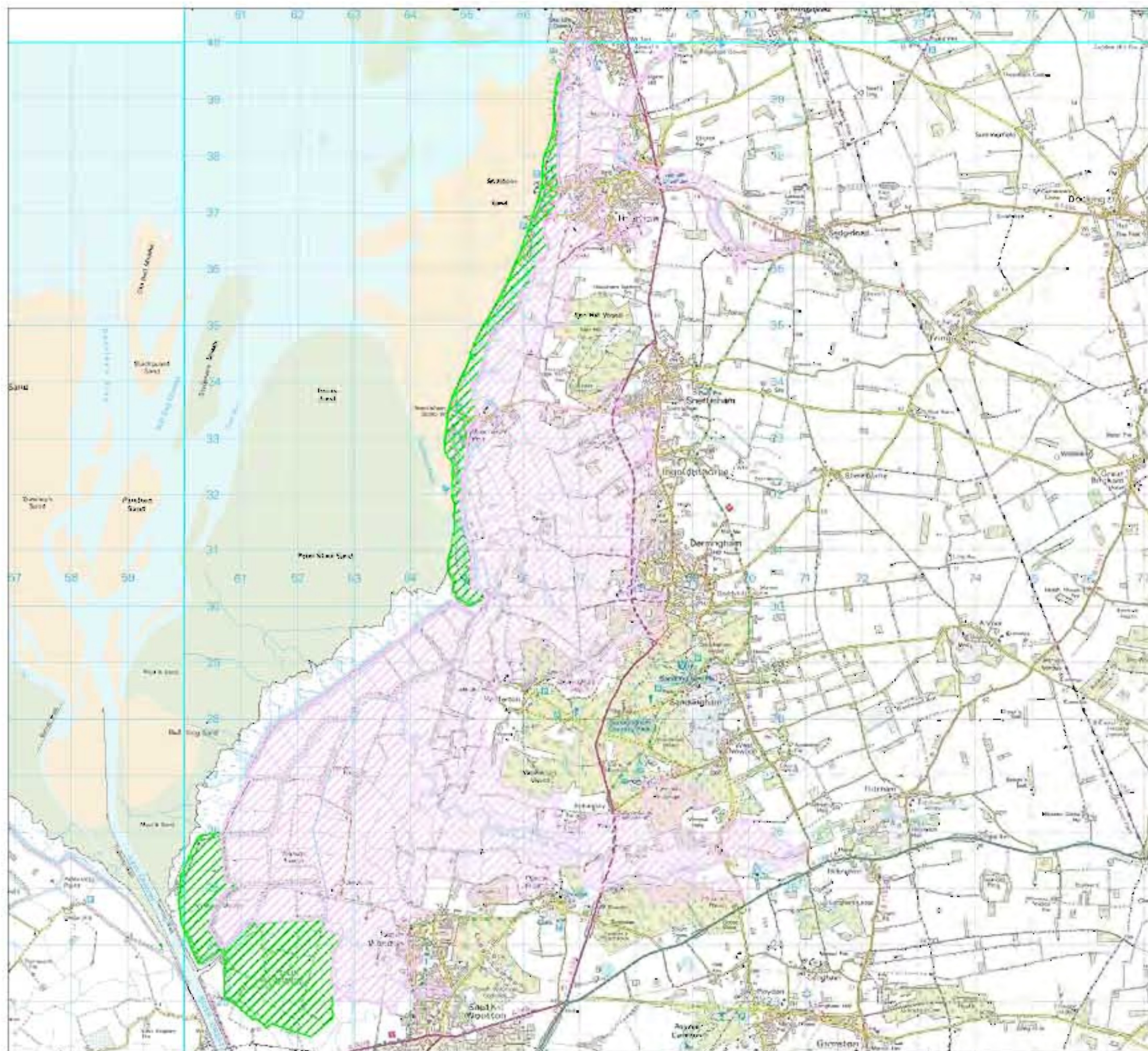
W. J. DUNCAN

Authorised by the Minister.

I hereby certify this to be
a true copy.



Authorised by the Minister.



SNETTISHAM DIFFERENTIAL RATING ORDER 1968 (COPY)



LEGEND

- Sub District A
- Sub District B

KEY MAP



SCALE	COPYRIGHT
Best Fit	Reproduced by permission of Ordnance Survey on behalf of HMSO. A Crown copyright and database right 2012. All rights reserved. Ordnance Survey 100052638.
PLOT DATE	
30/11/2012	
FILE NAME	
Rating Districts_KL.dwg	

THE LAND DRAINAGE ACTS 1930 AND 1961
SNETTISHAM INTERNAL DRAINAGE BOARD (DIFFERENTIAL RATING)
(AMENDMENT) ORDER 1972

The Snettisham Internal Drainage Board being the Drainage Board for the Snettisham Internal Drainage District in exercise of the powers conferred on them by Section 24 of the Land Drainage Act 1930 and after consultation with the Great Ouse River Authority hereby order as follows:-

1. This Order may be cited as the Snettisham Internal Drainage Board (Differential Rating) (Amendment) Order 1972 and shall have effect in relation to any drainage rate made by the Board for any period commencing after 31 March 1972.
2. The Snettisham Internal Drainage Board (Differential Rating) Order 1968 shall be varied by the transfer of the land shown coloured pink on the map sealed by the Board in relation to this Order from sub-district B to sub-district A.

The Common Seal of the Snettisham
Internal Drainage Board was
hereunto affixed

this 9th day of June, 1972
in the presence of:


.....
Chairman

.....
Clerk

The Minister of Agriculture, Fisheries and Food HEREBY CONFIRMS this
(Differential Rating) (Amendment) Order.

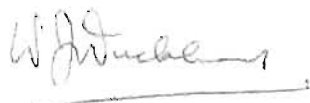
IN WITNESS whereof the Official Seal of the
Minister of Agriculture, Fisheries
and Food is hereunto affixed this
25th July, 1972.

L.S.

W. J. DUCKHAM

Authorised by the Minister.

I hereby certify this
to be a true copy.



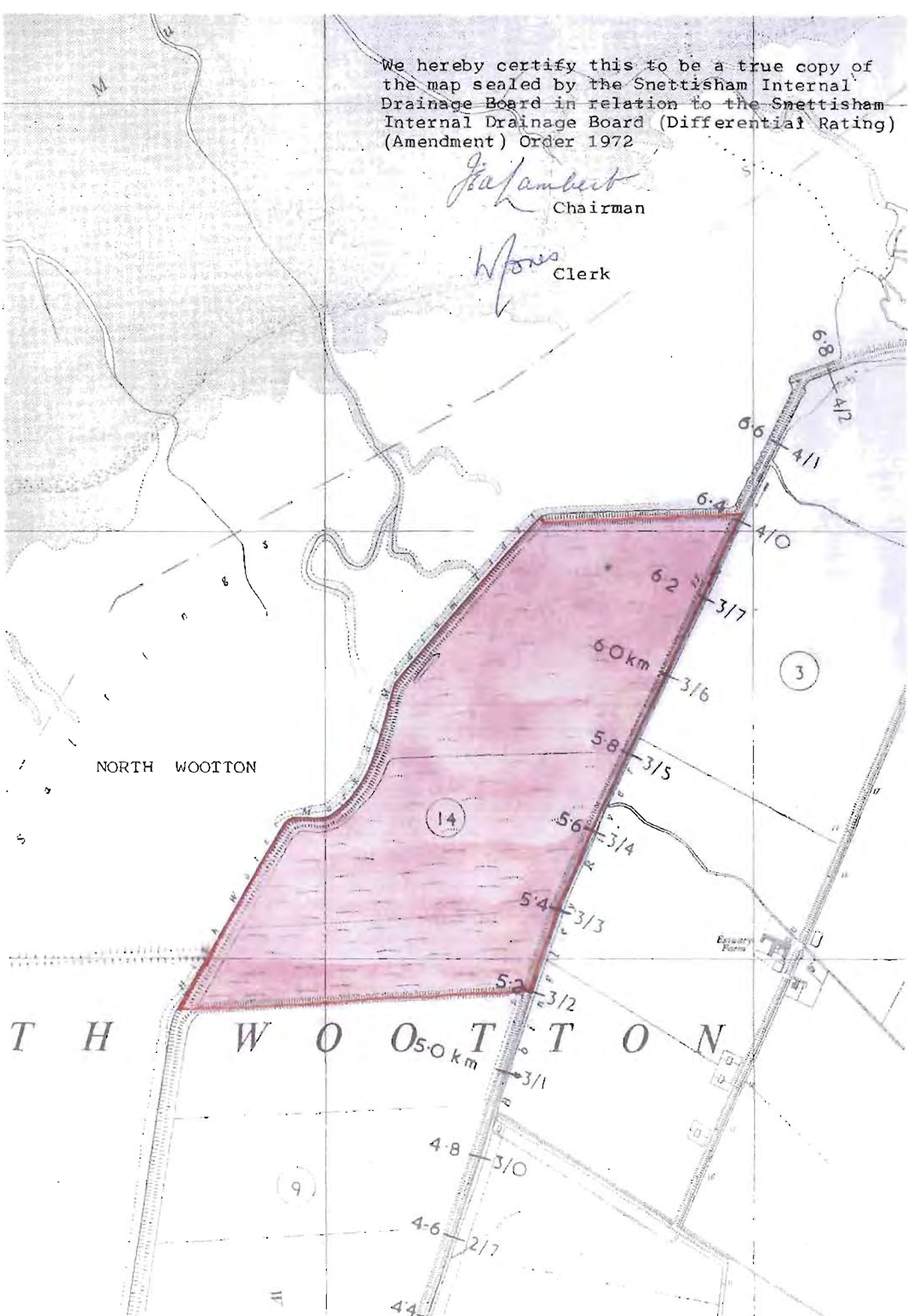
Authorised by the Minister.

S.

We hereby certify this to be a true copy of
the map sealed by the Snettisham Internal
Drainage Board in relation to the Snettisham
Internal Drainage Board (Differential Rating)
(Amendment) Order 1972

John Lambert
Chairman

W Jones
Clerk



Land Drainage Acts 1930 and 1961
Wingland Internal Drainage Board
(Differential Rating) Order 1972

WHEREAS the Wingland Internal Drainage Board as the drainage board for the Wingland Internal Drainage District are empowered by Section 24 (6) of the Land Drainage Act 1930, as amended by the Land Drainage Act 1961, if having regard to all the circumstances of the case they think that it is just so to do, to make and levy differential rates, and for that purpose to divide the said district into sub-districts:

AND WHEREAS the said Board think that it is just to make and levy differential rates as aforesaid:

NOW THEREFORE the said Board, in exercise of the powers vested in them by subsection - (6) of Section 24 of the said Act of 1930 and after consultation with the Welland and Nene River Authority, hereby order as follows:-

1. This Order may be cited as the Wingland Internal Drainage Board (Differential Rating) Order 1972.
2. For the purpose of making and levying differential rates for any period commencing after 31 March 1972 the said district shall be divided into two sub-districts, which sub-districts are shown in colour on the map sealed by the Board in relation to this Order and are set out in the Schedule to this Order.

SCHEDULE

Sub-district

Colour on map

A

Pink

B

Green



THE COMMON SEAL of the Wingland Internal Drainage Board was hereunto affixed this 15th day of August, 1972 in the presence of:

Chairman *A. H. Kirkham*

The Minister of Agriculture
Differential Rating under.

Fisheries and Food HEREBY CONFIRMS this

IN WITNESS whereof the official seal of the
Minister of Agriculture, Fisheries
and Food is herewith affixed this
22nd September, 1972.

L.S.

I hereby certify this
to be a true copy.

W. J. Duckham

Authorised by the Minister.

W. J. DUCKHAM

Authorised by the Minister.

B.



The Snettisham Internal Drainage Board being the Drainage Board for the Snettisham Drainage District in exercise of the powers conferred on them by Section 24 of the Land Drainage Act 1930 and after consultation with the Great Ouse River Authority hereby order as follows:-

1. This Order may be cited as the Snettisham Internal Drainage Board (Differential Rating) (Amendment) Order 1973 and shall have effect in relation to any drainage rate made by the Board for any period commencing after 31 March, 1973
2. The Snettisham Internal Drainage Board (Differential Rating) Order 1968 as amended by the Snettisham Internal Drainage Board (Differential Rating) (Amendment) Order 1972 shall be varied by the transfer of the land coloured pink on the map sealed by the Board in relation to this Order from sub-district B to sub-district A.

The Common Seal of the
Snettisham Internal Drainage
Board was hereunto affixed
this 18th day of July,
1973.
in the present of

.....*John Smith*.....
Chairman

.....*W. Jones*.....
Clerk

The Minister of Agriculture, Fisheries and Food HEREBY CONFIRMS this
Differential Rating Amendment Order.

IN WITNESS whereof the Official Seal of the
Minister of Agriculture, Fisheries
and Food is hereunto affixed this
20th September 1973.

L.S.

W. J. DUCKHAM

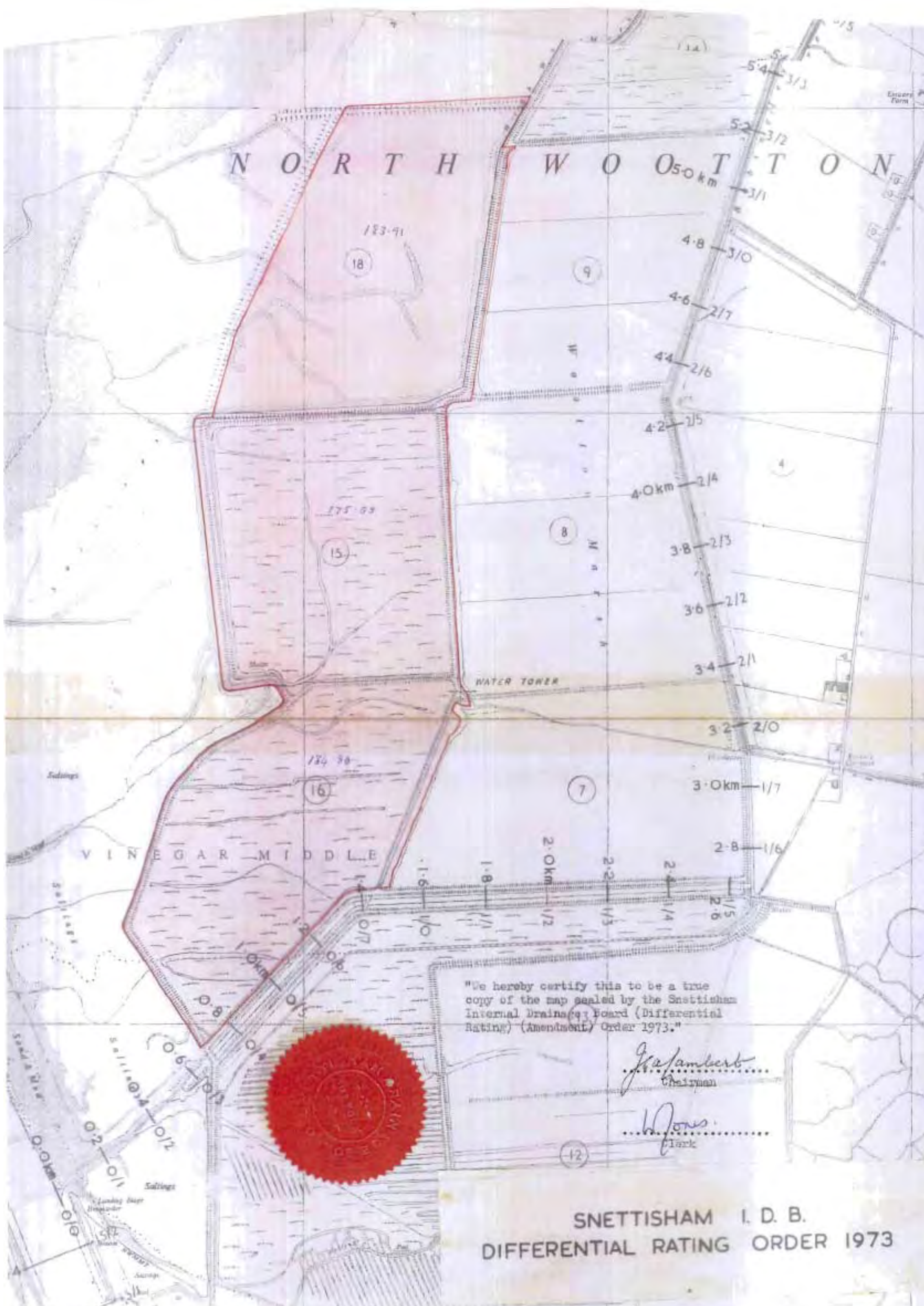
Authorised by the Minister.

I hereby certify this
to be a true copy.

W J Duckham

Authorised by the Minister.

NORTH WOOTTON

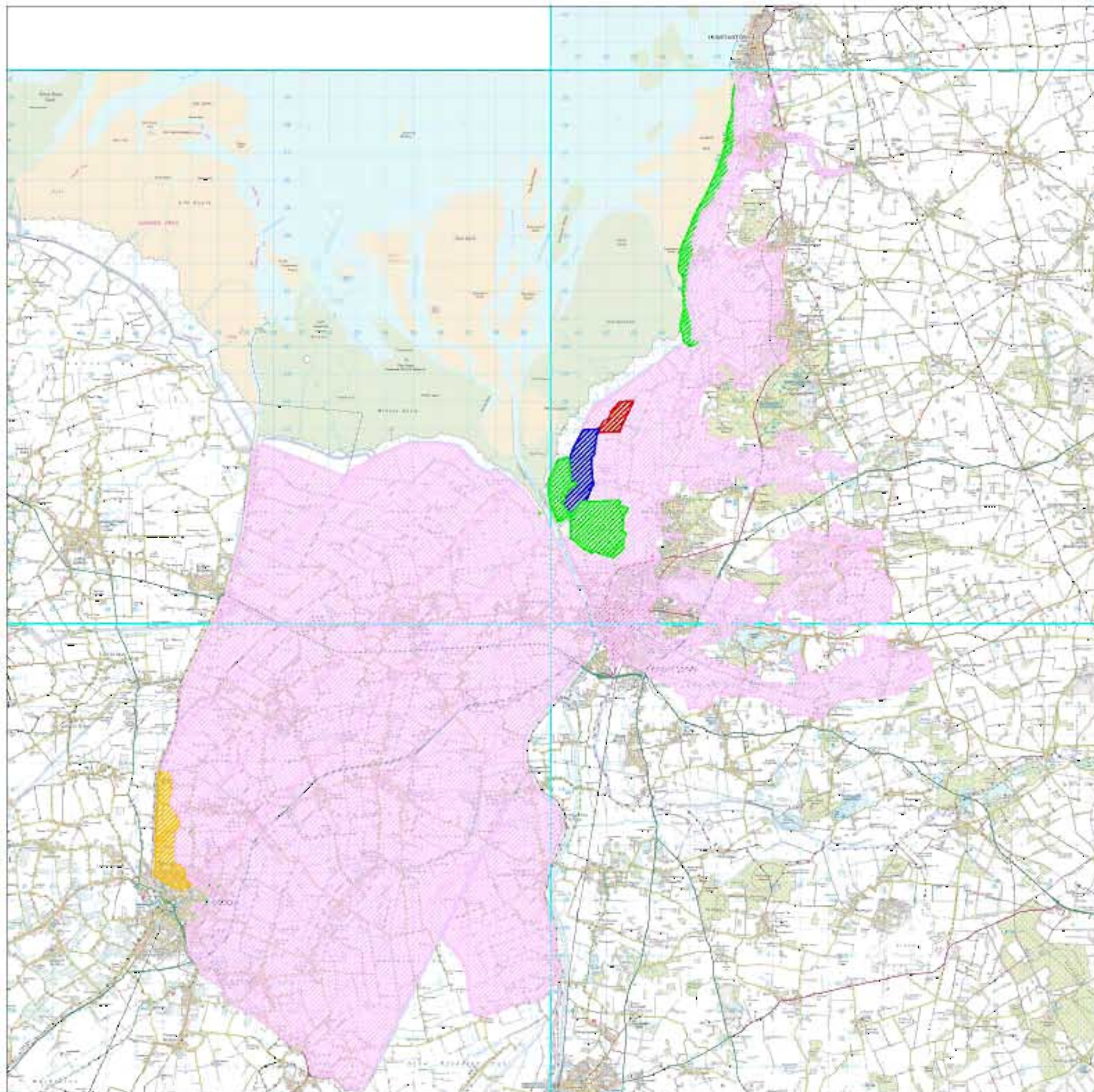


"We hereby certify this to be a true copy of the map sealed by the Snettisham Internal Drainage Board (Differential Rating) (Amendment) Order 1973."

J. Lambert
Chairman

W. Jones
Clerk

SNETTISHAM I. D. B.
DIFFERENTIAL RATING ORDER 1973



RATING DISTRICTS



King's Lynn
Drainage Board

LEGEND

- - Shettisham ID6 Differential Rating Order 1968
- - Shettisham ID6 Differential Rating (Amendment) Order 1972
- - Shettisham ID6 Differential Rating (Amendment) Order 1973
- - Wingland Differential Rating Order 1972
- - Main Area

KEY MAP



SCALE

Best Fit

PLOT DATE

30/11/2012

FILE NAME

Rating Districts_KL.dwg

COPYRIGHT

Reproduced by permission of Ordnance Survey on behalf of HMGO. © Crown copyright and database right 2012. All rights reserved. Ordnance Survey 100052838.