

A MEETING OF THE EAST SUFFOLK INTERNAL DRAINAGE BOARD WAS HELD IN ORFORD TOWN HALL, ORFORD, WOODBRIDGE, SUFFOLK ON TUESDAY, 17 JANUARY 2017 AT 10.30 AM.

Elected Members	Appointed Members
* P Cooke	Ipswich BC
J Foskett	Vacancy
* N Garrod	Vacancy
* E Greenwell	Vacancy
A Hall	
C Loyd	Mid Suffolk DC
C Mann	Mr J Caston
R Mann	Vacancy
* M Paul	Vacancy
* R Pipe	
* A Rowlands	
	Suffolk Coastal DC
	Mrs C Block
	* Mrs S Harvey
	* C Hedgley
	* Mrs J Marson
	Babergh DC, Ipswich BC, Mid Suffolk DC, Suffolk Coastal DC and Waveney DC
	* Mrs S Allen
	Vacancy
	Present (43%)

Sir Edward Greenwell in the Chair

In attendance:

Mr P J Camamile (Chief Executive),
Mr G Bloomfield (Catchment Engineer) and
Miss K Thomas (Project Manager)

ID East Suffolk IDB, Minute	Action
<p>01/17 APOLOGIES FOR ABSENCE</p>	
<p>01/17/01 Apologies for absence were received on behalf of Messrs J Caston, J Foskett, A Hall, C Loyd, C Mann, R Mann and Mrs C Block.</p>	
<p>02/17 DECLARATIONS OF INTEREST</p>	
<p>02/17/01 Sir Edward Greenwell declared an interest in all matters relating to the Alde & Ore Estuary Partnership due to his role as Chairman of that group. Mrs J Marson declared an interest in all matters relating to the Alde & Ore Estuary Partnership due to her membership of that group. Mr R Pipe declared an interest in all matters relating to the Alde & Ore Estuary Partnership due to his role as trustee of the Alde & Ore Estuary Trust. RESOLVED that this be noted.</p>	
<p>02/17/02 Mr M Paul declared an interest in all matters relating to the Deben Estuary Partnership of which he is a member. RESOLVED that this be noted.</p>	
<p>03/17 MINUTES OF THE LAST BOARD MEETING</p>	
<p>03/17/01 The minutes of the last Board meeting held on 12 October 2016 were approved and signed as a true record. Matters arising:</p>	
<p>03/17/02 Sudbourne Pumping Station – UKPN (45/16/01)</p> <p>It was agreed that the Catchment Engineer would contact UK Power Networks about the relocation of overhead cables at Sudbourne pumping station that were restricting the safe use of machines for ditch maintenance works on site at Sudbourne pumping station.</p>	GB
<p>04/17 ALDE & ORE WORKS COMMITTEE MINUTES</p>	
<p>04/17/01 The recommendations arising from the Alde & Ore Works Committee minutes of 7 December 2016 and 9 January 2017, (copies of which are filed in the Report Book), were considered in detail. Arising therefrom:</p>	
<p>04/17/02 Proposal for East Suffolk IDB to seek ministerial consent to apply for public works loan for Alde/Ore Estuary (04/17/03)</p> <p>Following detailed discussion, the proposal for East Suffolk IDB to seek ministerial consent to apply for a public works loan of £3 million repayable over a 30 year period, to be used to part fund improvement of flood defences primarily in the Lower Alde sub-district was put to the vote:</p> <p>Votes cast in favour: 8 Votes cast against: 1 (Adam Rowlands)</p>	

ID East Suffolk IDB, Minute	Action
<p>04/17/03 Subject to obtaining ministerial consent from DEFRA it was agreed and thereby RESOLVED to borrow £3 million from the Public Works Loan Board to be repaid over a 30 year period, to part fund flood defence improvement works primarily in the Board's Lower Alde sub district, subject to:</p> <ul style="list-style-type: none"> (i) AOET to keep the Board informed of the accumulated total amount of cash (net of all expenses) that had been received from the sale of enabling development land donated by land owners. If and when this exceeded £2 million, the Board may then choose to repay part or all of its public works loan to the extent of such excess, subject to the Board having sufficient cash funds to do so (from the receipt of grants from AOET or otherwise). (ii) Provision of a detailed financial costing of the delivery programme to be put in place to establish where works will commence and in what order of priority before starting any new projects (based on the approved Alde/Ore Estuary Plan, to ensure the most vulnerable walls are upgraded as a priority, in line with the 'worst first' principle). (iii) AOET confirms that the Trust will make grants to the Board to fund the work to implement the Estuary Plan. The Board will not start any new projects unless <u>either</u> it holds the cash funds to pay for such work <u>or</u> has received a grant from the AOET to fund the works together with confirmation from the AOET that it already holds the funds needed to make that grant <u>or</u> the Board has received a grant from sources other than AOET to cover the cost of the work. 	<p>PJC</p>
<p>04/17/04 Review of existing sub districts (05/17/01)</p> <p>It was agreed to review the Board's rating sub districts and introduce any agreed changes before 01 April 2018, to ensure that the gravity drained area within the Alde/Ore Estuary as shown on the plan annexed to these minutes, would also be paying a share of the sea wall reinstatement costs. RESOLVED that this be noted.</p>	<p>PJC</p>
<p>04/17/05 Extension of existing Drainage District (06/17/01)</p> <p>It was agreed to continue to lobby government through ADA for changes to the existing legislation to allow IDBs to extend to their full hydrological watershed catchment boundary, as this would facilitate the IDB collecting drainage rates from the upland area currently outside the drainage district. RESOLVED that this be noted</p>	<p>PJC</p>
<p>04/17/06 Revaluation of the Lower Alde Sub District (07/17/01)</p> <p>It was noted that any agricultural drainage ratepayer could ask the Board to revalue their drainage rating hereditament(s) at any time, should they feel that there had been a material change of circumstances and the amount of drainage rates they were paying was inequitable. However it was noted that it would not be possible to implement any wholesale revaluation of the drainage district or any of its sub districts that included domestic and business properties unless the existing</p>	

ID East Suffolk IDB, Minute	Action
<p>legislation was changed to facilitate this. RESOLVED that this be noted.</p>	
<p>05/17 RIVER DEBEN CATCHMENT WORKS COMMITTEE MINUTES</p>	
<p>05/17/01 Flooding Issues at Ufford (10/16/04)</p> <p>Members considered and approved the recommendation for the Board to apply for a flood risk activity permit (FRAP) in the Deben catchment to reduce bank erosion on the River Deben in the Ufford area, and at the same time to apply for a funding contribution from the EA, subject to Mr J Foskett obtaining written agreement from all affected landowners to works to alleviate the historic flooding at Ufford. RESOLVED that this be noted.</p>	<p>JF/GB/PR</p>
<p>05/17/02 East Suffolk Water Abstractors Group (ESWAG) (14/16/01)</p> <p>It was agreed that Tim Darby ESWAG would be invited to a future Board meeting to talk about abstraction.</p>	<p>KT</p>
<p>06/17 OPERATIONS REPORT</p>	
<p>06/17/01 The Operations Report was considered in detail and approved (a copy of which is filed in the Report Book). Arising therefrom:</p>	
<p>06/17/02 Pumped Districts (2)</p> <p>All the Board's pumps had been inspected/serviced with works arising as recorded in the Operations Report. The Hollesley pump had been visually inspected but due to its age and poor access had not been lifted as this was considered more detrimental than leaving it in situ. RESOLVED that this be noted.</p>	
<p>06/17/03 Deben Estuary Partnership Update (4.3)</p> <p>Updates for report only, as recorded in the Operations Report included the ongoing discussions with the EA on FDGiA funding for the Bawdsey Marshes frontage and the development of a saltmarsh strategy for the DEP, endorsed by Suffolk Coastal Forum. If successful the saltmarsh strategy will secure new investment streams to support local saltmarsh restoration and beneficial use of dredging projects, and, could provide natural protection to existing flood defences in the Deben estuary and reduce the need for managed realignment over the next 20 years. RESOLVED that this be noted.</p>	
<p>06/17/04 Waldringfield Marshes (4.4)</p> <p>Initial surveys on the saltmarsh restoration completed in October 2016 at Waldringfield Marshes showed signs of reducing erosion and the new brushwood polder fencing structure was providing a microhabitat for young fry and juvenile fish. The Board's Project Manager was</p>	<p>KT</p>

continuing to liaise with the Marine Management Organisation (MMO) about streamlining MMO licencing for other estuary initiatives. RESOLVED that this be noted.

06/17/05 Alde and Ore Estuary Partnership (AOEP) Update (4.6)

The Project Manager reported that following inconclusive results from recent modelling of the prioritised upper Alde/Ore estuary, (Snape, Aldeburgh and Iken walls, Hazlewood and Ham Creek), the AOEP had taken up the resulting opportunity for a full estuary model to be undertaken in early 2017.

06/17/06 Alde and Ore Estuary Partnership (AOEP) Update: Aldeburgh Town Wall (4.7)

East Suffolk IDB had completed the first phase of improvement/reinstatement works on Aldeburgh Town Wall using £500k EA funds for tidal surge repairs. The original soke dyke has yet to be infilled before bank profiling can be established and seeded. At the time of this meeting the Alde/Ore Estuary Trust had not made any financial contribution to the completed works. RESOLVED that this be noted.

06/17/07 Lowestoft Temporary Flood Barriers

Members were apprised of the Public Sector Cooperation Agreement between Waveney District Council and East Suffolk IDB for WMA (Eastern) IDBs employees to support the preparation, deployment and maintenance of the Lowestoft temporary flood barriers whereby WMA (Eastern) will maintain an out of hours 24/7 duty rota and response resource from October to March each year to 2021. RESOLVED that this be noted.

06/17/08 Health and Safety (6)

There were no health and safety incidents for report during this reporting period. RESOLVED that this be noted.

06/17/09 Planning (7)

There were no planning items for consideration during this reporting period. RESOLVED that this be noted.

07/17 SCHEDULE OF PAID ACCOUNTS

07/17/01 The Schedule of Paid Accounts for the period 1 October 2016 to 31 December 2016 totalling £599,336.60, (a copy of which is filed in the Report Book), was considered in detail and approved. There were no matters arising.

08/17 ESTIMATES 2017/18

08/17/01 The detailed estimates for 2017/18 were considered in detail and approved, (a copy of which is filed in the Report Book). Arising therefrom:

08/17/02 Capital Works 2017/18

The detailed Capital Works Estimate for 2017/18 as prepared by the Catchment Engineer, totalling £1,249,632, (£850,000 for fish/eel friendly pump replacement at Sudbourne and £250,000 for pump replacement at Hollesley, both dependent on receipt of grant funding, plus £149,632 annual charges and repayments on £3 million public works loan), was considered in detail and approved.

08/17/03 Maintenance Programme 2017/18

The Maintenance Works Estimate for 2017/18, totalling £381,148 was considered in detail and approved:

• River Deben Tidal Pumped Sub District 1	£111,922
• Lower Alde Tidal Pumped Sub District 2	£163,329
• AHB Tidal Pumped Sub District 3	£21,442
• Blyth Tidal Pumped Sub District 4	£28,944
• Gravity Sub District 5	<u>£55,511</u>
	£381,148

08/17/04 Consortium Charges 2017/18

The Administration and Technical Support Costs estimate for 2017/18, as recommended by the Consortium Management Committee on 9 December 2016 was considered in detail and approved. Arising therefrom:

08/17/05 It was agreed and thereby RESOLVED to approve the inclusion of the Technical Support Consortium charge of £178,419 in the Board's rate estimates for 2017/18.

08/17/06 It was agreed and thereby RESOLVED to approve the inclusion of the Administrative Support Consortium charge of £61,468 in the Board's rate estimates for 2017/18.

09/17 FINANCIAL YEAR 2017/18

LAY AND SEAL THE DRAINAGE RATE AND SPECIAL LEVIES

09/17/01 Annual Values

It was agreed and thereby RESOLVED to approve the aggregate annual values as at 31 December 2016, used for the purposes of raising and apportioning expenses from drainage rates and special levies for 2017/18.

09/17/02 River Deben Tidal Pumped Sub District

It was agreed and thereby RESOLVED to approve the net requirement of £43,316 for 2017/18, which equated to a drainage rate increase of 1.3% at 28.744p in the pound, and a 1.3% increase on the Special Levies due from the Billing Authorities:

Agricultural Drainage Rates	£32,470
Suffolk Coastal District Council	£28,655
Reserves	<u>-£17,809</u>
	£43,316

09/17/03 Lower Alde Tidal Pumped Sub District

It was agreed and thereby RESOLVED to approve the net requirement of £215,315 for 2017/18, to service a public works loan of £3 million at a fixed interest rate of 2.86% over a 30 year period to part fund sea wall improvement works in the Alde/Ore Estuary and which equated to a drainage rate increase of 220% at 127.162p in the pound and a 220% increase on the Special Levies due from the Billing Authorities:

Agricultural Drainage Rates	£196,374
Suffolk Coastal District Council	£32,771
Reserves	<u>-£13,830</u>
	£215,315

09/17/04 Alderton, Hollesley and Bawdsey (AHB) Tidal Pumped Sub District

It was agreed and thereby RESOLVED to approve the net requirement of £9,285 for 2017/18, which equated to a drainage rate increase of 1.3% at 34.067p in the pound:

Agricultural Drainage Rates	£12,912
Reserves	<u>-£3,627</u>
	£9,285

09/17/05 Blyth Tidal Pumped Sub District

It was agreed and thereby RESOLVED to approve the net requirement of £5,670 for 2017/18, which equated to a drainage rate increase of 1.3% at 103.584p in the pound and a 1.3% increase on the Special Levies due from the Billing Authorities:

Agricultural Drainage Rates	£8,478
Waveney District Council	£137
Reserves	<u>-£2,945</u>
	£5,670

09/17/06 Gravity Sub District

It was agreed and thereby RESOLVED to approve the net requirement of £140,822 for 2017/18, to write off bad debts where the bailiff has been unable to collect drainage rates and which equated to a drainage rate increase of 5% at 5.697p in the pound and a 5% increase on the Special Levies due from the Billing Authorities:

Agricultural Drainage Rate	£26,294
Suffolk Coastal District Council	£32,057
Mid Suffolk District Council	£36,591
Ipswich Borough Council	£34,513
Babergh District Council	£1,629
Waveney District Council	£2,806
Reserves	<u>£6,932</u>

£140,822

- 09/17/07** It was agreed and thereby RESOLVED to approve the transfer of actual operating surplus monies for 2016/17 from the general reserve to the capital reserve for each district, per the Board's Capital Finance and Reserves Policy.

10/17 RISK REGISTER

- 10/17/01** The Board's Risk Register and Risk Management Policy (copies of which are filed in the Report Book), which had been updated in line with the Governance and Accountability for Smaller Authorities in England Practitioners' Guide to Proper Practices 2016, were considered in detail and approved. There were no matters arising.

11/17 CORRESPONDENCE

- 11/17/01** There was no further correspondence requiring the Board's consideration in this reporting period.

12/17 NEXT MEETING

- 12/17/01** The next East Suffolk IDB meeting will be on Wednesday, 7 June 2017 at 10.30 am in Orford Town Hall.

13/17 ANY OTHER BUSINESS

- 13/17/01** There was no other business to discuss.

14/17 OPEN FORUM: TO HEAR FROM MEMBERS OF THE PUBLIC, WITH LEAVE OF THE CHAIRMAN

- 14/17/01** There were no members of the public present at this meeting.

15/17 CONSORTIUM MATTERS

15/17/01 The unconfirmed minutes of the last Consortium Management Committee meeting held on 9 December 2016 were considered in detail and approved. Arising therefrom:

15/17/02 Financial Report (34/16/02)

It was agreed and thereby RESOLVED to approve the WMA CMC recommendation to pass on the projected surplus at 31 March 2017 back to the individual WMA Member Boards per the split as set out in the WMA Income and Expenditure Account. RESOLVED that this be noted.

15/17/03 WMA Estimates 2017/18 (35/16/02)

The detailed Consortium Budget and Basis of Apportionment for the financial year 2017/18, as approved at the Consortium Management Committee meeting on 9 December 2016, was considered in detail and approved by the Board. There were no matters arising.

15/17/04 It was agreed and thereby RESOLVED to approve the recommendation for the WMA (Eastern) Boards to complete the implementation of its new management structure in order to meet the needs of the core business.

15/17/05 Schedule of Paid Accounts

The WMA Schedule of Paid Accounts for the period 1 April 2016 to 30 November 2016 totalling £734,844.17 as approved at the Consortium Management Committee meeting on 9 December 2016, was considered in detail and adopted. There were no matters arising.

15/17/06 Financial Report

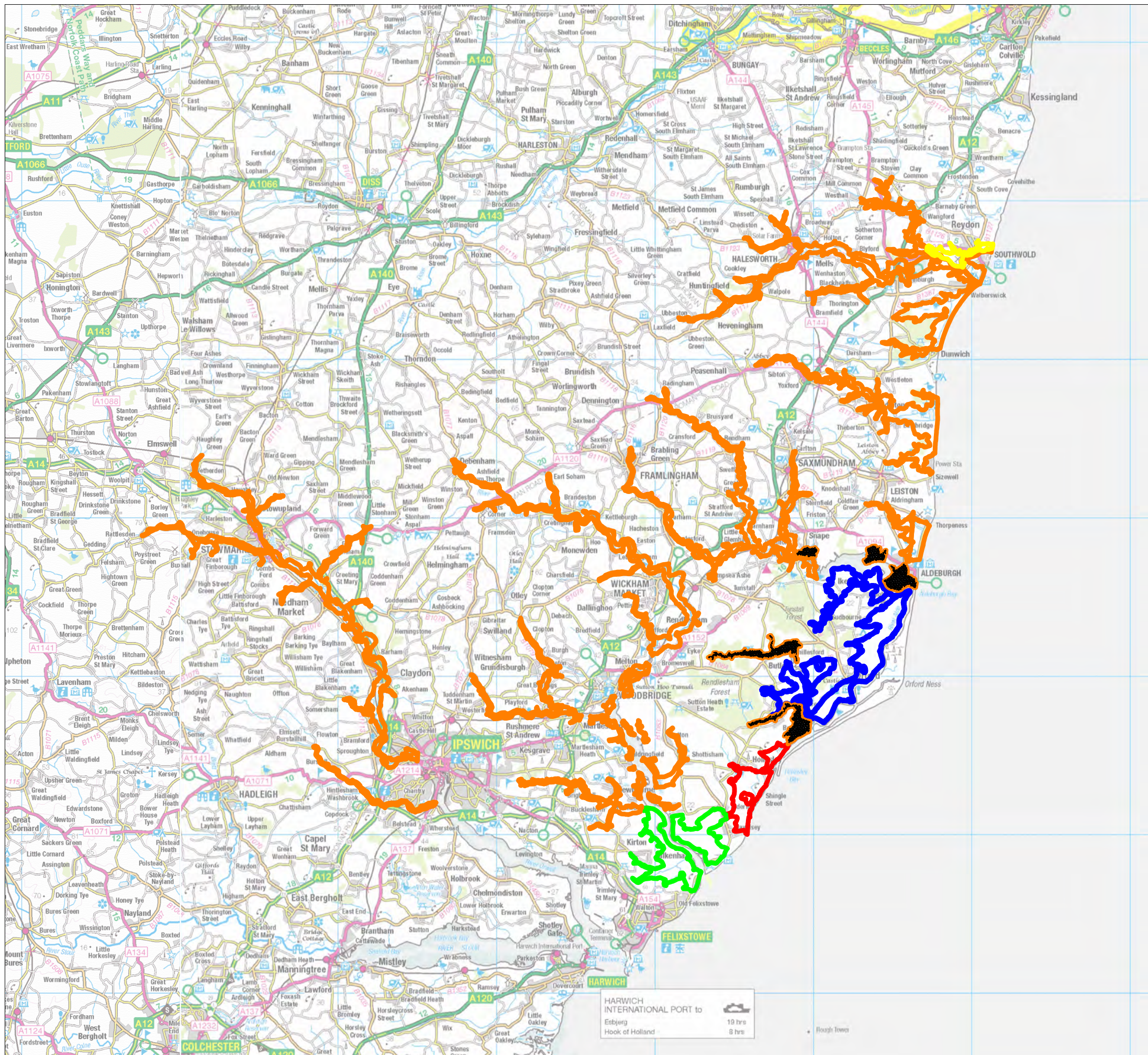
The WMA Financial Report for the period 1 April 2016 to 30 November 2016, as approved at the Consortium Management Committee meeting on 9 December 2016 was considered in detail and adopted by the Board. There were no matters arising.

15/17/07 Issues for discussion at the next CMC meeting

There were no specific issues raised by members that would require discussion at the next Consortium Management Committee meeting on 31 March 2017.

16/17 CONFIDENTIAL BUSINESS

16/17/01 There was no confidential business to discuss.



EXTENDED LOWER ALDE SUB-DISTRICT



DIFFERENTIAL ORDER 2013

“This is the map sealed in relation to the East Suffolk IDB Differential Rating Order 2013”

SCHEDULE

- A: Lower Alde (Tidal Pumped)
- B: River Deben (Tidal Pumped)
- C: Alderton, Hollesly and Bawdsey (Tidal Pumped)
- D: River Blyth (Tidal Pumped)
- E: Gravity Area
- Extended Lower Alde Sub-district



SCALE	COPYRIGHT
1:250,000	Reproduced by permission of Ordnance Survey on behalf of HMSO. © Crown copyright and database right 2012. All rights reserved.
PLOT DATE	Ordnance Survey
01/12/2016	100052705.
FILE NAME	
ESIDB_DRO2013.dwg	

OPERATIONS REPORT FOR THE PERIOD OCTOBER 2016 - JANUARY 2017

1. Operational information for the Board

1.1 Revenue Maintenance Works

1.2 Please refer to maintenance works in the projected out-turns for 2016/17.

2. Pumped Districts

2.1 Tidal Blyth Catchment

2.1.1 Reydon Pumping Station (No. Pumps - 2)

Service to the pumps completed, no major problems reported.

Weed clearance of screen ongoing problem, weed removal 360 organised through Barry Day.

2.2 Tidal Alde & Ore Catchment

2.2.1 Butley Pumping Station (No. Pumps - 1)

Service to pump completed, with first seat of seals showing failure. Temporary pump has been installed while pump is stripped and overhauled estimated costs £4-6k.

2.2.2 Chillesford Pumping Station (No. Pumps -1)

Pump service completed, no major problems reported.

2.2.3 Gedgrave Pumping Station (No. Pumps - 1)

Pump service completed, no major problems reported. Outfall flap repairs are holding and are being monitored. As part of the national eel assessment of pumping station components, alternatives to the traditional flaps are being tested these include rubberised silicon valves which are less influenced by tidal and wave action reducing wear.

2.2.4 Sudbourne Pumping Station (No. Pumps - 1)

Pump service completed, no major problems reported this period.

2.2.5 Iken Pumping Station (No. Pumps -1)

Pump service completed, no major problems reported this period.

2.2.6 Hollesley Colony Marsh Pumping Station (No. Pumps - 1)

Pump visually inspected with a view to remove for service. However, due to very poor access and age of the asset (c40years old), it was felt that while it was still working it was likely more harm than good would be achieved by dismantling it to lift and service it. As the system has a gravity bypass it is recommended to leave until it fails.

2.3 Tidal Deben Catchment

2.3.1 Bawdsey Pumping Station (No. Pumps - 1)

Pump inspection undertaken after the stabilisation of the concrete floor slab. The anti-rotation plate which prevents the pump spinning within the pump tube has failed causing the pump to rap around its power and lifting chains thereby locking itself into place. Although serviceable and operational the first set of seals have failed and will need to be lifted.

On the return of the Butley Pump the M&E team will install coffer dams and lift Bawdsey pump installing the temporary pump while Bawdsey pump is stripped and overhauled estimated costs £6-10k

2.3.2 King's Fleet Pumping Station (No. Pumps - 1)

Service undertaken to pump, installing the temporary pump while King's fleet pump was stripped and overhauled.

2.3.3 Falkenham Pumping Station (No. Pumps -2)

Pump service completed, no major problems reported this period.

See note under DEP section regarding saltmarsh issues.

3. Gravity Districts

Nothing to report.

4. Capital Works & Operational Matters

4.1 Capital Works

Sudbourne Eel Friendly Pumping Station Trial

Nothing to report this period.

4.2 Strategic sourcing of clay for flood defence

No further waste exemption licences have been secured for landowners at this time. Snape Maltings has requested clay for their project at the Maltings pending officers locating a source.

Through the Deben and Alde and Ore Sub-committees we continue to offer to apply for waste exemption licences on behalf of landowners around the estuary who wish to stockpile up to 5000 tonnes of material for emergency use at a later date.

4.3 Deben Estuary Partnership (DEP)

We attend the Steering Group, newly revived Action Group and undertake work on behalf of the Saltmarsh Group. We are working with the DEP to progress a number of projects arising from the Deben Estuary Plan. Key projects include:

- Progressed discussions with EA for the Bawdsey Marshes frontage as IDB have been asked to submit application for FDGIA funds through a project Appraisal Report for this frontage as it is the largest flood cell in the Deben and needs improvement.
- IDB engineers are currently costing the frontage and a meeting was held on the 11 January 2017 to discuss these costs with the key landowners and DEP representatives.
- Given the impact of this flood cell on wider estuary flood risk, we have asked the EA and SCDC whether there are opportunities to draw in benefits from other estuary flood cells (which have benefited from flood wall upgrades post 2013 flood) and not claimed any FDGIA. Walls at Kirton, Waldringfield and Martlesham Creek have all been upgraded to DEP plan designs with flood recovery funds and/or private investment by communities and landowners. Discussions are continuing but ESIDB will present a Business Case to EA for Bawdsey that includes this concept. This will be completed later in 2017 once the DEP and landowners have identified partnership funding sources to match-fund the FDGIA.
- We have been developing a saltmarsh strategy for the DEP which has been endorsed by Suffolk Coastal Forum to secure new investment streams to support local saltmarsh restoration and beneficial use of dredging projects. If successful this will support natural protection to existing flood defences in the estuary and reduce the need for managed realignment over the next 20 years. A costed programme of works is being developed based on initial estimates that have been shared with DEP. The IDB project manager is developing a project that will ensure marine businesses benefit from streamlined dredging licences and landowners in the upper estuary can receive dredged material to enhance marshes in front of their walls. Elsewhere costs are being developed for wide scale restoration of marshes using polderwork methods. The costed programme of works will be shared with SCC and SCDC who will make links to wider investment streams which ESIDB will manage and deliver on the ground on behalf of DEP. The ESIDB will be developing a strategic licence with the MMO to streamline consents and reduce costs to local businesses.

4.4 Waldringfield Marshes

Work on this frontage completed last year and was officially launched at a ceremony on 1 December 2015. There has been a lot of interest in our project approach with the Waldringfield Flood Defence Group, particularly in terms of the new freshwater and intertidal habitat created and restored. This

is seen as a good practice example of what can be achieved in rural locations and is informing our approach at new defence projects elsewhere.

The saltmarsh restoration work completed in October, designed by the IDB project manager and installed by contractors Stephenson Brothers we have delivered almost 1km of new brushwood polder fencing within the Waldringfield marsh. The project aims reduce erosion at the toe of the wall and reinstate badly eroded habitat throughout the marsh. Initial surveys show 6-10mm of accretion behind the fencing structures and a recent fisheries survey suggests these new fences are acting as a microhabitat for young fry and juvenile fish including bass. This demonstrates the importance of saltmarsh management for our local fisheries industry.

The project has also pioneered the MMO licence process and officers have had lengthy discussion with MMO and statutory bodies to try and streamline this licencing approach for other estuary and community initiatives.



Brushwood polder fencing Bass Fry

4.5 Alde and Ore Estuary Partnership (AOEP)

ESIDB officers continue to support the AOEP who are now in the initial stages of delivering their estuary plan outcomes. The AOEP have set up an Implementation Group to act on their behalf to develop the delivery programme which the Project Manager attends.

4.6 Upper Estuary Schemes

There has been a decision by the AOEP to take forward their estuary plan in 2 phases, Upper Estuary and Lower Estuary. The Upper estuary will take priority and includes Snape, Aldeburgh, and Iken walls along with Hazlewood and Ham Creek. ESIDB officers have developed an outline programme of works and costed options for Snape and Aldeburgh. Recent flood risk modelling work by Eden Vale Young (commissioned by the Alde and Ore Association on behalf of the AOEP) highlighted potential increases in flood risk elsewhere in the estuary, notably at Orford. As further Upper estuary modelling has proved inconclusive an opportunity has arisen for a full estuary model to be undertaken in the first few months of 2017. Officers have advised that this would be an opportune time to use this model to emulate the

entire AOEP plan as it is outlined in the plan document. This would allow EA to understand any flood risk implications of the AOEP approach, underpin Flood Risk Activity Permits (needed to undertake wall works) and streamline our applications for FDGIA going forward. The AOEP agreed to this approach at their meeting in December 2016.

Iken - Officers have surveyed this frontage and arranged for clay to be delivered to the landowner at the western end of the flood cell. Further work on design and costs will follow once we have the modelling results for the estuary.

There have also been subsequent discussions about the need for alternative investment and funding routes to deliver the outcomes of the estuary plan. The Project Manager is working with the AOEP Funding group to develop alternative funding approaches and consider cost-saving methods to reduce flood defence improvement costs. The initial estimates undertaken by ESIDB officers are for approximately £10M of flood defence improvements which would attract circa £1M of FDGIA.

4.7 Aldeburgh Town Wall

The IDB has completed the first phase of works at Aldeburgh following works on site from June to early December 2016. The first phase was completed to time and budget utilising £500k of EA surge tide repair budget funds. Approximately 1500m of existing tidal embankment has been improved, with some materials stockpiled for onward use to achieve the AOEP plan design. This along with further back face profiling work is required to achieve final design build in 2017. Approximately 150-160,000 tonnes of locally won clay material has been excavated, transported and placed, creating pond / wildlife areas as well as a new soke dyke. At the present time the AOEP/AOET has not paid any funding contribution for this phase of works to the IDB and this payment remains outstanding. To finish Phase I works the remaining original soke dyke needs to be infilled before final embankment back face profile is established, top soiled and seeded. Some of the new soke dykes are already holding water.



Dealing with a potentially significant archaeological find in area of new soke dyke excavation.



Aerial view of new soke dyke excavation early phases.



New widened bank at most downstream end of working area



Clay donor area creating a new pond



4.8 Snape Village and Maltings

Officers continue to support the aspiration to progress the Aldeburgh Music flood defence project for the Maltings alongside the Snape village scheme to the AOEP's design standard. A draft business case for FDGIA has been developed by the Project Manager but recent flood risk modelling of the Upper Estuary has proved inconclusive in terms of the potential effects of wall improvements at Snape Village in increasing flood risk elsewhere in the estuary and we will await further modelling to complete this piece of work. Meanwhile discussions about funding have been favourable. The RFCC have indicated a levy contribution would be possible if funds are available. Aldeburgh Music are also contributing to the scheme. However, with levy and FDGIA there will still be a need for further partnership funding to meet the £730k scheme total.

4.9 Holistic Approach to Water Management (HAWM) Felixstowe Peninsula Project:

The key focus being assessed this period, in discussion with Natural England, is the quantity of fresh water needed to flow into the estuary to ensure there is no adverse effect on the legally protected Special Protection Area (SPA) for non-breeding wading bird population (the reason for the estuary's environmental designation). A co-ordinated winter bird survey is currently underway using consultant Wild Frontier, to establish how and where the

birds utilise fresh water flows to enable Natural England to provide better advice on this matter.

Consultants Mott Macdonald funded by Anglian Water (as part of the Water Resources East Anglia project) are also currently undertaking optimisation assessments to establish the need of storage, including optimum size and location for the balancing reservoir and distribution network. This parcel of works is being supported by ESWAG.

There was a meeting in December 2016 to discuss the issue of saltmarsh erosion at the King's Fleet pump. The Deben Estuary partnership have raised concerns about the erosion of SSSI saltmarsh adjacent to the pumped outfall. This issue was raised in 2009 when the IDB made a contribution of £5000 to mitigate for the effects of the rotating piles which had caused an area of marsh, several metres in area, to subside. The DEP project to retain sediments and develop the marsh adjacent to the outfall has recently been deemed as accreting by the DEP and the landowner and therefore the IDB officers have suggested that the mitigation is sufficient at this time. We have agreed to review the situation in April when we will have a better understanding of the how long it will be for the capital scheme to be implemented. The IDB have offered to develop a saltmarsh restoration element to the capital project which would seek to maximise the mudflats of the Kings Fleet area subject to partnership support and funding. Natural England have informed the DEP of this position.

4.10 Sizewell C Nuclear Power Station

The proposed development is currently out to consultation. The Catchment Engineer has been involved in all aspects of the drainage and water level management discussions and we have no outstanding issues at this time.

4.11 Minsmere Levels Stakeholders Group

Nothing to report this period.

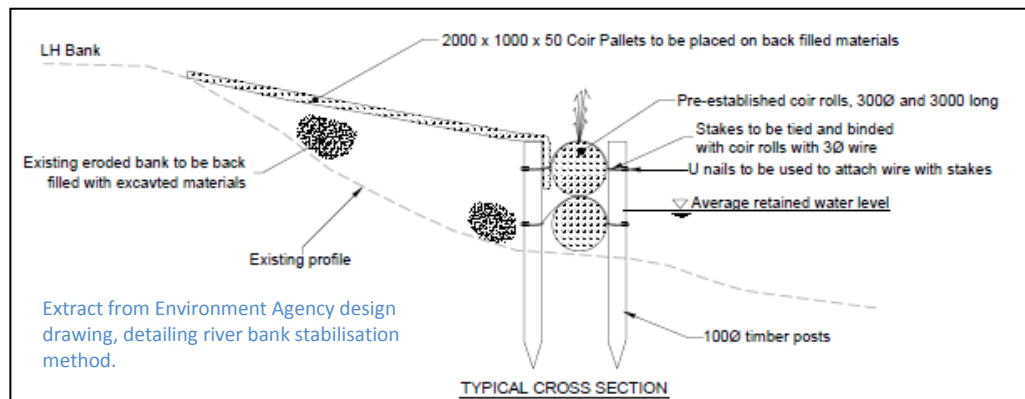
4.12 Ufford Marshes – Management of River Deben overflow

The EA have stated that changes to water levels at Sink Farm Sluice and in the channels leading down to the area where erosion has been identified as an issue- would have a negative impact on long term water level monitoring in the main river channel. This was reported at the Deben Works Committee meeting in December 2016.

4.13 Benhall Bridge river restoration project

In Autumn 2016 officers combined a private landowner drainage project with an opportunity to deliver some small scale river bank stabilisation work for the Environment Agency. The work was located on the downstream side of Benhall Bridge, Sternfield. Over the previous few winters approximately 10-15m of riverbank on the River Fromus had been eroded and a large silt berm had established in the main channel. We saw an opportunity to create a project that combined the drainage needs of the landowner and the flood risk needs of EA into one delivery phase. As this approach would lead to less disturbance to the landowner's property and environment, the landowner agreed to a joint project with EA. We undertook the work with EA under a Public Sector Cooperation Agreement (PSCA)

A combination of silt removal, placement and use of coir rolls has led to a successful small scale project that has delivered real cost savings on the original quote accepted by the EA, primarily due to using the same resource to do two jobs at the same location at the same time and have created an improved outcome. This helps both organisations meet our Water Framework Directive requirements and shows how small-scale projects in partnership with landowners can make a real difference for wildlife and the wider river environment.



4.14 National Grid Bramford to Twinstead Connection project

Detailed design options underway designers have been notified of potential liability of Surface Water development contributions

4.15 East Anglia ONE Offshore Wind farm project

Detailed designs near completion. Advice provided regarding likely consent requirements for the various watercourse crossings through the county. Enabling works to commence spring.

4.16 Lowestoft Temporary Flood Barriers

In late Autumn 2016 a Public Sector Cooperation Agreement (PSCA) derived piece of work with Waveney District Council to support the preparation, deployment and maintenance of the Lowestoft Temporary Flood Barriers (LTFB) was initiated.

Waveney DC are working towards a bigger flood defence project for Lowestoft using Capital FDGiA to deliver a permanent solution to flood risk within Lowestoft as a result of the devastating Dec 2013 tidal surge. This is planned to come on-line in 2021. The temporary flood barriers are an interim solution, offering a fixed level of protection to key parts of Lowestoft.

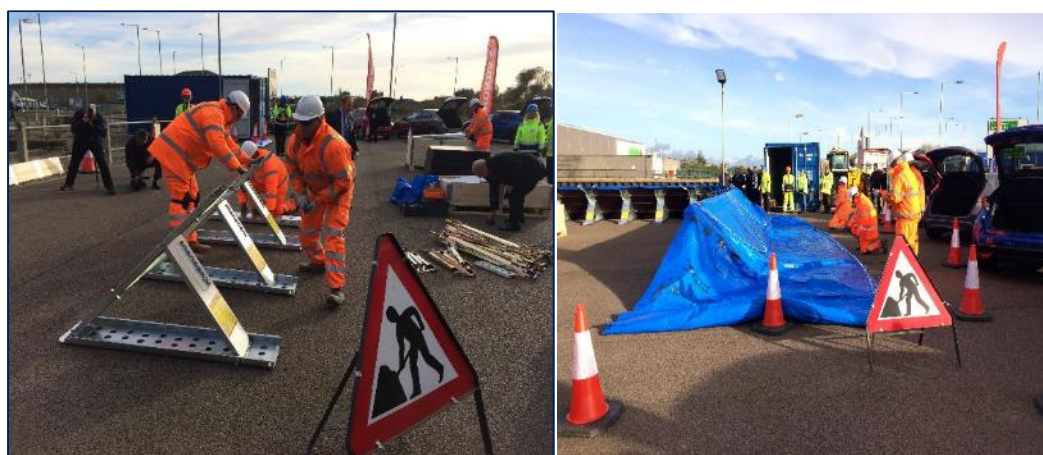
LTFB offers a level of protection to 3.20mAODN. This protection level was derived by WDC and their larger capital project consultant CH2M. Approximately 1400m of special light-weight aluminium demountable flood barriers have been bought from a specialist Swedish company called GeoDesign.

ESIDB and Waveney Norse undertook two days of training over the 28-29 November 2016 to ensure as many people that were available at the time received training direct from the manufacturer.

A Deployment Plan document exists that will aid the installation, management and demobilisation of the flood barriers during a tidal surge of sufficient level to require the barriers to be installed.

ESIDB is the lead Contractor for delivering the installation, manning and demobilisation of the LTFB once trigger levels have been met and activation calls received from the Suffolk Resilience Forum (SRF) via Waveney DC. Working in partnership with Waveney Norse we will coordinate the initial response and onward deployment management.

From the beginning of October to end of March each year up until 2021 ESIDB will maintain an out of hours 24/7 dedicated duty roster and response resource capable of mobilising to install the barriers at 36hours notice from Waveney DC.



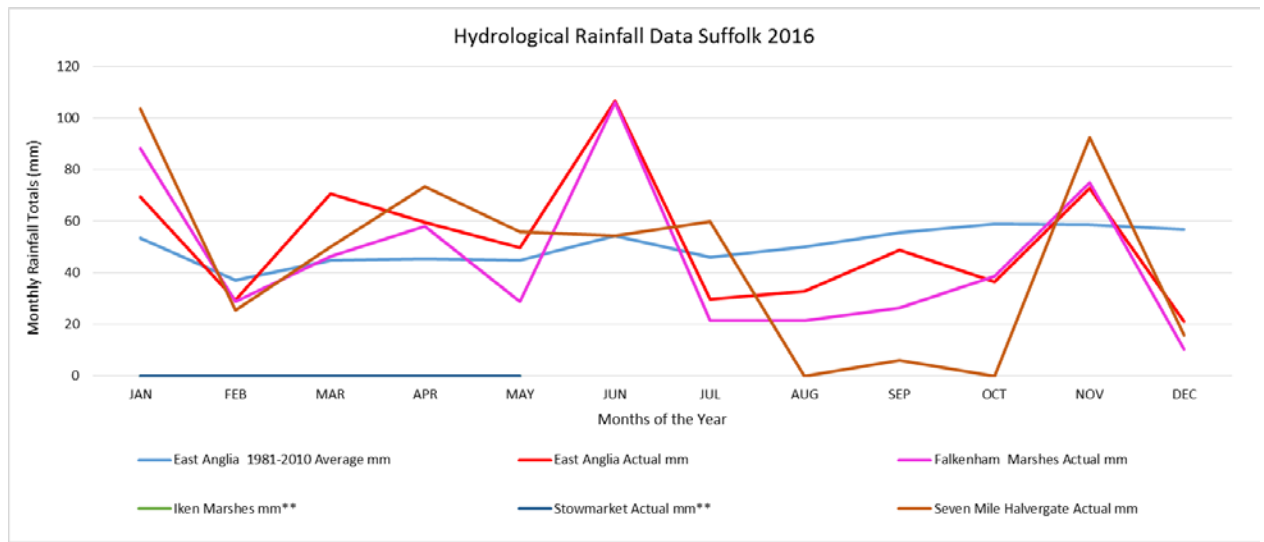
5. Hydrological Report

(extracts from <http://www.metoffice.gov.uk/climate/uk/summaries/2016>)

October began wet in the south with low pressure moving across the country, but an easterly type became established by the 3rd, and the rest of the month had mostly easterly winds, which brought showers into many eastern coastal areas, but plenty of sunshine for the west and especially the south-west. The weather turned more unsettled between the 15th and 19th. For most of the month temperatures were mostly near or a little below normal, but it was warm at the end of the month.

November began quiet and mild in the south, but colder air quickly spread southwards via a slack northerly airflow. Northerly winds were frequent in the first third of the month, and there was some snow in the north on the 9th. The weather turned more unsettled around mid-month. Storm Angus brought wet and windy weather and flooding especially to the south-west on the 19th/20th, and another system on the 21st brought rain and flooding further north. The month ended with high pressure in charge, and it was mostly dry and sunny and increasingly cold.

December began settled with high pressure in charge, and cold and frosty in the south but with temperatures nearer average in the north. From the 6th to the 20th, southerly winds brought generally mild and often quiet weather, though with some rain or drizzle at times. The 21st to 26th was unsettled and windy, especially in the north, but the month ended quiet, with widespread frost and fog especially in the south.



	East Anglia 1981-2010 Average mm	East Anglia Actual mm	Falkenham Marshes Actual mm	Iken Marshes mm**	Stowmarket Actual mm**	Seven Mile Halvergate Actual mm
JAN	53.4	69.5	88.2	0	0	103.4
FEB	37.2	29.3	28.7	0	0	25.4
MAR	44.8	70.5	46.4	0	0	50
APR	45.3	59.6	58.1	0	0	73.4
MAY	44.8	49.7	28.9	0	0	56
JUN	54.3	106.5	106			54.3
JUL	46	29.7	21.4			60
AUG	50.1	32.8	21.4			0
SEP	55.6	48.8	26.2			6
OCT	59	36.5	38.6			0
NOV	58.5	72.7	75			92.6
DEC	56.8	21.1	10.2			16

*http://www.metoffice.gov.uk/climate/uk/averages/19712000/areal/east_anglia.html

** <http://www.metoffice.gov.uk/climate/uk/2015/>

The actual rainfall figures are an estimated mean for the district, are indicative only and can vary substantially from sub-catchment to sub-catchment.

6.0 Health and Safety

Nothing to report this period.

7.0 Planning

Nothing to report this period.

8.0 Complaints

Nothing to report this period.

**EAST SUFFOLK INTERNAL DRAINAGE BOARD
RISK REGISTER**

STRATEGIC OBJECTIVES	RISK	IMPACT	LIKELIHOOD SCORE (1 – 3)	IMPACT SCORE (1 – 3)	RISK RATING (HIGH, MEDIUM, LOW)	RESPONSE (ACTIONS PLANNED/TAKEN)
To reduce the flood risk to people, property, public infrastructure and the natural environment by providing and maintaining technically, environmentally and economically sustainable flood defences within the Internal Drainage District (IDD)	Reduction in, or insufficient finance, grant and income EA may cease to pay highland water contributions to IDBs	Reduction in FCERM service the Board is able to provide Inability to replace assets	3	3	High 9 →	Asset Management Plan and profile future funding requirements, (Capital Finance and Reserves Policy). Explore alternative funding streams
	Environment Agency (EA) is no longer willing or able to carry out work on sea defences that protects the Internal Drainage District, or continues to maintain these but to a reduced standard	Potential overtopping during severe weather events and associated cost implications	3	3	High 9 ↓	Working with stakeholders and Estuary Community Groups to develop investment plans for flood compartment and deliver works on the ground PSCA in place with other RMAs to undertake works Increased capacity and capability through WMA (Eastern)
	Implementation of Eel Regulations 2009 requiring changes to Board infrastructure	Prohibitive cost to update all infrastructure to be compliant with the regulations	2	3	High 6 →	Sites assessed and prioritised and agreed with EA. Need to apply for grant aid if/when derogation is not extended beyond Dec 2020 EA has issued derogation to Dec 2020 on priority sites at Bawdsey, Falkenham, Iken, Sudbourne and Hollesley pending results of accredited EA national trials
	EA is no longer willing or able to carry out work on Main Rivers	Will limit the Board's ability to fulfil its statutory function	1	3	Medium 3 →	Need to formally identify record and advise EA of works required. Develop protocol to undertake works on recharge

**EAST SUFFOLK INTERNAL DRAINAGE BOARD
RISK REGISTER**

STRATEGIC OBJECTIVES	RISK	IMPACT	LIKELIHOOD SCORE (1 – 3)	IMPACT SCORE (1 – 3)	RISK RATING (HIGH, MEDIUM, LOW)	RESPONSE (ACTIONS PLANNED/TAKEN)
						<p>basis</p> <p>Potential to implement PSCA to undertake these works</p> <p>Continue to encourage the EA to remain lengths of less strategically important main river for the IDB to adopt and maintain</p>
	<p>Damage caused to third party property or individuals, as a result of carrying out works</p>	<p>Compensation claims made against the Board</p> <p>Loss of confidence in the Board's capabilities</p>	2	2	Medium 4 ↓	<p>Documented Staff training and Employee handbook in place to limit risk</p> <p>Internal controls provide for segregation of duties</p> <p>Use of approved suppliers</p> <p>Insurance, Financial Regulations, Health & Safety Policy, risk assessments and safe systems of work all in place</p> <p>ISO9001 accredited with external audit of QA systems</p> <p>Complaints register</p>
	<p>Unable to respond to a major incident, due to lack of resources</p>	<p>The IDB is not a first line responder</p>	1	2	Low 2 ↓	<p>Partnership working with other RMAs, including PSCA with Waveney DC for IDB to assist in severe weather event situations –deployment of Lowestoft flood defence barrier</p> <p>Additional resource in post across WMA (Eastern) Boards</p>

**EAST SUFFOLK INTERNAL DRAINAGE BOARD
RISK REGISTER**

STRATEGIC OBJECTIVES	RISK	IMPACT	LIKELIHOOD SCORE (1 – 3)	IMPACT SCORE (1 – 3)	RISK RATING (HIGH, MEDIUM, LOW)	RESPONSE (ACTIONS PLANNED/TAKEN)
	Loss or damage of assets through pilferage, theft or neglect	Reduces IDB capability of fulfilling its statutory function Cost implications for replacement, even with insurance	1	3	Medium 3 ↓	
	Access to skills and core competencies is reduced	Potential to limit delivery of a quality service and thereby weaken confidence of stakeholders in the IDB's capabilities	1	3	Medium 3 ↓	Board is an equal member of the WMA CMC, which strengthens the organisation and assures access to appropriate skills/competencies. Board is kept updated via member representation at CMC meetings Extensive staff training is recorded and documented Effective management, Employee handbook and compliant disciplinary and grievance procedures Key man insurance is in place for appropriate personnel
	Failure to comply with all current U.K. and E.U. legislation/regulation and/or generally accepted accountancy practice	IDB would incur penalties/fines	1	3	Medium 3 →	Employ competent staff through WMA. Training for staff and Board members Board approves Financial Accounts Internal audit

**EAST SUFFOLK INTERNAL DRAINAGE BOARD
RISK REGISTER**

STRATEGIC OBJECTIVES	RISK	IMPACT	LIKELIHOOD SCORE (1 – 3)	IMPACT SCORE (1 – 3)	RISK RATING (HIGH, MEDIUM, LOW)	RESPONSE (ACTIONS PLANNED/TAKEN)
						Engage HR, Legal and Health and Safety specialists as and when required
	Claims and/or bad publicity against IDB in the event of failure to provide a 24 hour/365 day emergency response for the community	Loss of public confidence in the IDB Potentially damaging to the IDB relationship with other RMAs	1	2	Low 2 ↓	As a WMA member Board there is access to support from other member Boards and the WMA Staffing Plan and Duty Rota Emergency workforce and volunteers available Procedures for managing the media are set out in the Board's Reserved Matters
	Public do not know who to contact in an emergency	Delayed response	1	2	Low 2 →	Contact information on website: http://www.wlma.org.uk/east-suffolk-idb/contact-us/ and in telephone directory Duty officer emergency telephone line LRF/LLFA have contact details
	Loss of income through error or fraud	Cost implication for external assistance that may be required to recover monies May need to implement further training and/or disciplinary procedure	1	2	Low 2 →	Board approved Financial Regulations, Anti-Fraud/Corruption Policy, Whistleblowing Policy Internal controls and segregation of duties Internal and external audit Insurance

**EAST SUFFOLK INTERNAL DRAINAGE BOARD
RISK REGISTER**

STRATEGIC OBJECTIVES	RISK	IMPACT	LIKELIHOOD SCORE (1 – 3)	IMPACT SCORE (1 – 3)	RISK RATING (HIGH, MEDIUM, LOW)	RESPONSE (ACTIONS PLANNED/TAKEN)
<p>To become the delivery partner of choice for the Lead Local Flood Authority (LLFA) and Environment Agency (EA) within the Board's hydraulic sub catchment</p>	<p>LLFA and/or EA use contractors to carry out the work in areas outside the Internal Drainage District (IDD) and on Main Rivers/Tidal Defences both in and outside the IDD</p> <p>LLFA and EA take over the functions of the IDB</p>	<p>Would reduce the control the IDB has over quality of works undertaken, and if of a lower standard could affect the IDB's ability to fulfil its statutory function in the IDD</p> <p>If the LLFA/EA takes over the functions of the IDB, the IDB would cease to exist</p>	<p>1</p>	<p>3</p>	<p>Medium 3 ↓</p>	<p>Build and maintain trust and understanding with LLFA, EA and DEFRA</p> <p>Regular liaison meetings with EA</p> <p>Continue to encourage EA to de-main low priority main river for adoption by IDB</p> <p>Take on works where possible to demonstrate professionalism and VFM</p> <p>Monitor performance and review governance arrangements</p> <p>Availability of Public Sector Cooperation Agreement (PSCA)</p> <p>Back office functions are spread across the WMA Member Boards to reduce costs, strengthen organisation and increase influence</p> <p>Member of ADA</p> <p>Develop links with local media</p>
	<p>Unable to take on the extra work due to lack of resources</p>	<p>Could reduce LLFA/EA confidence in the IDB's ability to deliver</p>	<p>2</p>	<p>2</p>	<p>Medium 4 ↓</p>	<p>Arrangement with WMA Member Boards for support</p> <p>Introduction of new management structure for WMA (Eastern) Boards</p> <p>Additional Resource in post</p>

**EAST SUFFOLK INTERNAL DRAINAGE BOARD
RISK REGISTER**

STRATEGIC OBJECTIVES	RISK	IMPACT	LIKELIHOOD SCORE (1 – 3)	IMPACT SCORE (1 – 3)	RISK RATING (HIGH, MEDIUM, LOW)	RESPONSE (ACTIONS PLANNED/TAKEN)
						<p>and shared across other WMA (Eastern) Boards to increase capacity and capability</p> <p>Review rating and electoral sub districts</p>
<p>To enable and facilitate land use for residential, commercial, recreational and environmental purposes by guiding and regulating activities, which have the potential to increase flood risk</p>	<p>Planning Authorities ignore advice provided by Board</p> <p>Lack of staff resources results in turning a blind eye to Byelaw/Land Drainage Act infringements and contraventions or failure to collect development contributions and commuted sums</p> <p>Potential for developers to allow SUDs to be managed by private companies who allow them to fall into disrepair through lack of long term maintenance</p>	<p>Increased flood risk</p> <p>Potential for lost income from SWDCs and commuted sums</p> <p>Inadequate or total lack of maintenance of SUDs could have an adverse impact on the IDB infrastructure and subsequently increase the risk of flooding</p>	2	3	High 6 ↑	<p>Get involved with each constituent Planning Authority to better integrate/ coordinate planning and flood risk management issues</p> <p>Board comments made on planning applications are available on each Planning Authority's website</p> <p>Planning/Enforcement issues reported at Board and Committee meetings</p> <p>Board has access to Planning/Enforcement Officer through WMA</p> <p>Lobby LPAs to include IDBs as Statutory Consultees and to treat IDB watercourses as SUDs</p> <p>Promote IDB services for adoption of SUDs in planning consents to ensure they are maintained in perpetuity Look to introduce a SUDs adoption and charging policy</p>
<p>To nurture, enhance and maintain the natural habitats and species, which exist in and alongside watercourses,</p>	<p>Non-delivery/ non compliance of Biodiversity Action Plan (BAP)</p>	<p>Board does not meet its environmental targets. Potential to incur</p>	2	2	Medium 4 ↓	<p>BAP approved by Board and submitted to DEFRA and EA</p> <p>Work to WFD compliant SMO</p>

**EAST SUFFOLK INTERNAL DRAINAGE BOARD
RISK REGISTER**

STRATEGIC OBJECTIVES	RISK	IMPACT	LIKELIHOOD SCORE (1 – 3)	IMPACT SCORE (1 – 3)	RISK RATING (HIGH, MEDIUM, LOW)	RESPONSE (ACTIONS PLANNED/TAKEN)
<p>wherever practical to ensure there is no net loss of biodiversity</p>	<p>Implementation of BAP leads to increased flood risk and increased maintenance costs</p> <p>Increasing cost implications of managing invasive species</p>	<p>penalties/fines</p> <p>Failure to balance environmental needs with management of flood risk</p> <p>Failure to successfully control/eradicate invasive species</p>				<p>Prioritise each watercourse according to flood risk, based on criterion agreed by the Board</p> <p>Prepare a programme of environmental survey work in and alongside Board watercourses</p> <p>Officers monitor and report environmental performance to Board</p> <p>Staff awareness training</p> <p>ISO 14001 accreditation and external audit of QA systems</p> <p>Actions monitored by EA, NE, Police, SWT and local population</p> <p>Complaints Register</p>

East Suffolk IDB

Schedule of Paid Accounts

Payment Date From : 01/10/2016

Payment Date To : 31/12/2016

<u>Account ID</u>	<u>Name</u>	<u>Details</u>	<u>Amount Paid This Period</u>
AN0001	Anglia Farmers Ltd	Electricity/Materials	122,445.93
AU0002	Auto Plant	Plant Repairs	884.37
BR0004	Broads (2006) IDB	Plant & Labour hire/Materials	77,168.77
CO0004	Collins Skip Hire	Skip Hire	156.00
CO0005	S J Cobbold Suffolk	Skill Foreman Training	237.60
DA0001	Barry J Day & Sons	Weed Clearance	240.00
DO0001	Ernest Doe & Sons Ltd	Chainsaw chain	26.26
EN0003	Enforcement Bailiffs Ltd	Bailiffs Fees	105.00
GO0001	Mr G Goymer	Labour	5,938.74
GO0003	B J Goose	Plant/labour hire	131,126.11
GO0004	B G Goose & Partners	Bog Mats	15,330.00
HB0001	H B Ecology	Mitigation Supervision	8,256.56
HM0001	HMRC	VAT	27,124.30
IN0001	Independent Lifting Services Ltd	Slings/shackles	106.57
LA0001	Mervyn Lambert Plant Ltd	Welfare Unit Hire/Traffic	6,802.80
LA0002	Laser Civil Engineering &	Labour	7,014.00
MO0001	Mole Trading Ltd	Gas oil	11,171.75
NO0001	Norfolk Rivers IDB	Labour	26,695.63
OT0001	OTT Hydrometry Ltd	Telemetry Hardware	27,697.37
PE0001	J T Pegg & Sons Ltd	Blanking plate/bolts	434.40
RI0002	Ridgway Rentals Ltd	Digger Hire	2,400.00
RO0001	Rossendales	Bailiff Fees	62.00
RT0001	RT.Space	Design and Artwork	160.00
ST0002	Stephenson Bros Ltd	Flood defence protection	14,280.00
TU0002	Mr P Tubby	Labour	400.00
UR0001	Uretek (UK) Ltd	Void Filling	7,650.00
WA0002	Ms H Wallis	Archaeological Monitoring	2,452.05
WA0003	Watson Fuels	Gas Oil	13,982.68
WA0011	Water Management Alliance	Technical Support Costs	82,288.79
WO0002	Workwear (East Anglia) Ltd	Protective Clothing	79.00
YA0001	Yarmouth Rewinds Ltd	Repairs to Flygt pump	6,619.92

Please note that the amounts shown above include Vat £ 599,336.60

Distributed to:

Members

Allen Ms S
Block Mrs C
Caston J
Cooke P N R
Foskett J
Garrod N
Greenwell Sir E (Chairman)
Hall A R
Harvey Mrs S
Hedgley C
Loyd C A
Mann C J
Mann R W
Marson Mrs J
Paul M A
Pipe R J (Vice-Chairman)
Rowlands A J

Officers

Bloomfield G
Camamile P J
Roberts P
Thomas Miss K

East Suffolk IDB
Meeting 17 January 2017