

Bespoke Coastal Civils Services



**PUBLIC ACCESS
LIAISON**

**STORM
DAMAGE**

GPS levelling equipment

Public liaison

**DEDICATED
WORKSHOP**

PLANT & EQUIPMENT

Sympathetic repairs

Partnership working

BEACH RECHARGE & REPROFILE

**TIDAL
WORKING**

**DDA REGULATION
COMPLIANCE**

**SUB CONTRACTOR
MANAGEMENT**

Asset Inspections

Design

Bespoke Fabrication

Emergency response

Skilled craftsmen

Structural repairs

Survey

**PRINCIPLE
CONTRACTOR**

**PRINCIPLE
DESIGNER**

Historic structures

CDM

**PROJECT
COORDINATION**

Groyne fields

INHOUSE FABRICATION

Reinforced concrete

The Water Management Alliance (WMA) Consortium have a bespoke coastal maintenance team, consisting of team members with specific skills in repair, maintenance and coastal civils works.



Day to Day Repair & Maintenance:



Works to repair and maintain concrete, timber, rock and geotextile structures.



Public safety warning, control and exclusion works.



Local redistribution of beach material.



The replacement, repair and re-coating of Navigational Aids.



The repair and replacement of public access and amenity structures.



Short notice response to asset damage.



Demolition, making safe and removal of structures.



Out of hours Emergency Response services.

Repair Projects

- Works to seawalls, revetments, timber and rock groynes
- Slope stabilisation
- Structure scour protection
- Public access and amenity structures
- Step repairs and replacement – concrete and metal
- Key clamp handrailing
- Void investigations & filling
- Fabrication of steps and walkways in house
- Re-sealing expansion joints
- Tarmac repairs and promenade resurfacing
- Sign design, fabrication & installation



Featured Projects

Southwold Fender.....5

Felixstowe Beach Huts.....6

Claremont Pier.....7

Lowestoft Flint Wall Repointing.....8

North & South Felixstowe Groynes.....9

Southwold Floodgate.....10

Gunton Steel Groyne Safety Repairs.....11

Southwold Beach Recharge.....12

North Denes and Silver Rail Floodwall and Promenade.....13

Felixstowe Coping Stones.....14

Thorpeness Rock Revetment.....15



Southwold Fender



Duration:
1-3 weeks

Value:
£5 - 100k

Our coastal team undertake annual asset inspections of the Southwold Fender structure, including an assessment of the condition of all welds, joints and fixings to enable proactive works for repairs to be undertaken.

Inspection records are used to facilitate the fabrication of bespoke fittings, so that post storm damage or general wear and tear to different elements, can be replaced quickly and easily.

Using our in-house fabrication workshop the WMA team are able to make new fixings and structures quickly and easily, enabling speedy recovery efforts to be made.

This proactive approach allows the team to work with the client to plan repair works safely and effectively for periods of low spring tides and calm conditions.



Felixstowe Beach Huts

Working in partnership with the Clients team we carefully reprofile and level beach material, allowing beach huts to be re-located, ahead of the summer season.

The WMA team are able to efficiently plan and coordinate activities with the clients, due to our local presence and long term programme of works.



Duration:

1 week

Value:

<£10k





Claremont Pier

Following health and safety concerns the WMA team were engaged to undertake a programme of improvement to the pier foundations, through applying spray concrete to strengthen certain elements.

Working with a specialist contractor, the WMA team agreed design and application standards, acting as Principle Designer & Principle Contractor for the works.

Further to this we also carried out repairs to the foul drainage system under the pier, filling voids and securing the site for the future.



Duration:

5 weeks

Value:

>£50k





Lowestoft Flint Wall Repointing

The WMA team have a number of skilled craftsmen able to undertake sympathetic, detailed, architectural work. Our team frequently undertake structural repairs to Lowestoft's historic flint sea wall, to help maintain its structural integrity without affecting its traditional visual aesthetic.

Working during periods of low tide our team carefully plan and programme activities to maximise the working windows in a given period.





North & South Felixstowe Groynes

The WMA team frequently manage coastal timber groyne fields to increase the life span of these historic but crucial assets, which maintain beach levels on our dynamic coastline. Our team are able to repair timbers as and when required, removing damaged sections and installing new ones, whilst also repairing connecting metalwork and fixings.

All metal works can be fabricated in house, using our dedicated workshop, allowing for safer and more efficient works on site.

Our team are fully resourced with mobile plant to remove any sharp sections from structures and often install or replace signage to compliment public safety.



Duration:

3+ weeks

Value:

£10-50k





Southwold Floodgate

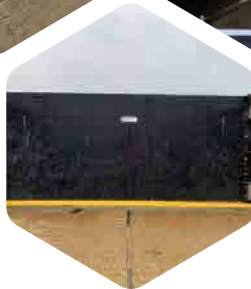
Working closely to understand our client's needs the WMA team undertook the role of Principle Designer to develop a bespoke floodgate solution. Using our GPS levelling equipment we surveyed the site and designed seawall and ramp alterations to construct an accessible and attractive solution. We then worked as Principle Contractor to install the works, which included reinforced concrete, tarmacking and drainage adjustments.

Duration:

3 weeks

Value:

<£10k

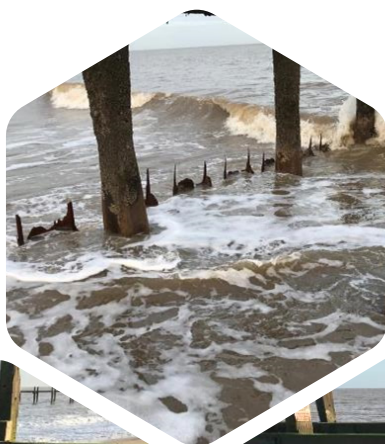




Gunton Steel Groyne Safety Repairs

Following a health and safety inspection our client identified sharp sections of steel, which needed to be made safe. Our team quickly attended site with mobile plant and cutting equipment, removing and making safe the areas required.

Having a 24/7 emergency system in place, the WMA team are able to respond quickly and are able to deliver the work required in a safe and highly efficient manner.



Duration:

1 week

Value:

<£5k



Southwold Beach Recharge

After storm and erosion damage had stripped material from Southwold beach, an unprotected large drop from the promenade had formed. The WMA team were tasked with reprofiling the beach, in order to level to remove this risk.

Using a variety of plant our team developed a safe working method, which allowed the works to happen without closing large areas of public access.

The team liaised with key members of the community to keep them informed of progress and provided key information, as required.



Duration:

1 week

Value:

<10k





North Denes and Silver Rail Floodwall and Promenade

On the North Denes and Silver Rail Floodwall and Promenade, Lowestoft, the WMA team has undertaken numerous concrete sea wall and slab repairs. The most recent work carried out by our team has reinforced the structural integrity of the floodwall, while enhancing the durability of the promenade. These improvements not only strengthen coastal defences, but also contribute to the overall safety and accessibility of the space for both residents and visitors alike.



Duration:

4-5 weeks

Value:

<£25k



Felixstowe Coping Stones

At Felixstowe, the WMA team carried out essential maintenance on the coping stones by re-bedding and replacing them where necessary. In cases where replacement was not feasible, we installed concrete capping as a durable alternative. These repairs help maintain the structural integrity of the sea defences, while ensuring long-term resilience against coastal conditions.



Duration:
3-4 weeks
Value:
>£40k



Thorpeness Rock Revetment (Private Project)

The coastal village of Thorpeness is threatened by erosion and storms, causing damage to properties and infrastructure. In February 2021, WMA Engineers worked with a private landowner to address the severe risk of cliff top failure and property loss. We designed an emergency stabilisation scheme with East Suffolk Council to mitigate immediate damage and we acted as principle contractor to construct the design; a substantial rock armor revetment, within a two week working window.



Duration:

2 weeks

Value:

>£600k



Get in touch



info@wlma.org.uk



01553 819600



Pierpoint House,
28 Horsley's
Fields, Kings Lynn,
Norfolk, PE30 5DD



www.wlma.org.uk

Follow us



@WaterManagementAlliance



@WaterManagementAlliance



@The_WMA



@The_WMA



@The_WMA